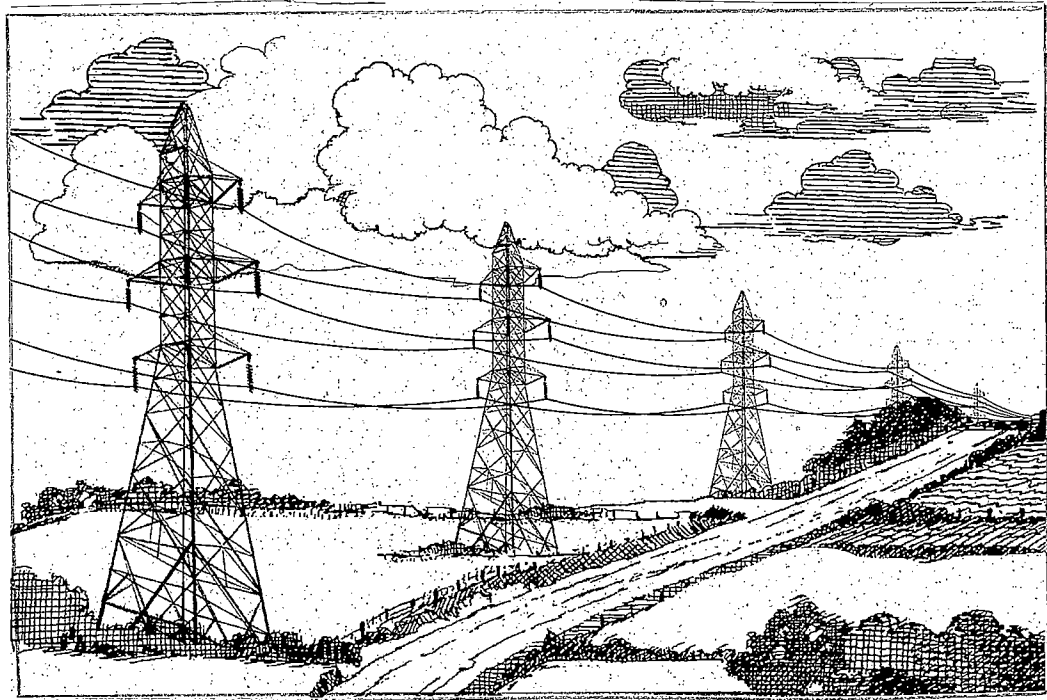


SEVENTEENTH BIENNIAL REPORT
OF
THE NEBRASKA POWER REVIEW BOARD



to the
Governor of Nebraska
July 1, 2010 through June 30, 2012

INTRODUCTION

The Nebraska Power Review Board is pleased to present its Biennial Report covering the period of July 1, 2010 through June 30, 2012. The report is prepared in compliance with the requirements set out in Neb. Rev. Stat. section 70-1003(4). The report contains information on the Board's budget and activities during the two-year period, and provides a brief description for each application upon which the Board took action. These include applications for generation facilities, most transmission facilities located outside a power supplier's service area, amendments to retail service area agreements, and amendments to public power district charters.

Table of Contents

I.	Board Members and Staff	1
II.	Expenditure Reports	2
III.	Statistical Summary	3
IV.	Generational Facilities.....	4
V.	Microwave Communications Facility	6
VI.	Transmission Line Applications Requiring Board Approval.....	8
VII.	Retail Service Area Agreement Amendments.....	17
VIII.	Wholesale Service Area Agreement Modifications	24
IX.	Amendments to District Charters	26
X.	Complaints	33
XI.	Roster of Power Suppliers Operating in Nebraska	36
	A. Wholesale Power Suppliers	37
	B. Generation and Transmission Associations	37
	C. Public Power Districts and Cooperatives	37
	D. Municipal Power Suppliers	40
	E. Power Suppliers by Category	45
XII.	Nebraska Power Association (NPA) Load and Capability Report.....	46
	A. Introductory Letter	47
	B. Statewide Capability vs. Obligation Chart Committed Resources.....	51
	C. Committed Load & Generating Capacity in Megawatts.....	52
	D. Statewide Capability vs. Obligation Chart Committed, Planned & Studied Resources Chart	53
	E. Committed, Planned & Studied Load & Generation Capacity In Megawatts	54
	F. Committed, Planned and Studied Accredited Capability	55
	G. Renewable Energy (Nameplate)	56
	H. 2011 Existing Generating Capability Data.....	57
	I. Statewide Capability vs. Obligation Committed Resources With Southwest Power Pool Future Scenario (Retire Coal Units <200MW).....	61
XIII.	2010 Research & Conservation Report (Data Pages Only—entire document available at www.powerreview.nebraska.org)	62
	A. Executive Summary	63
	B. 2010 Energy Efficiency and Conservation Block Grant Funded Projects	69
	C. Nebraska Net Metered Renewable Installations	72
	D. Nebraska Utility Programs Offerings.....	73

BOARD MEMBERS

Chair	Michael Siedschlag, Omaha Term expires January 1, 2014
Vice Chair	Stephen Lichter, Waterloo Term expires January 1, 2013
Member	Patrick Bourne, Omaha Term expires January 1, 2013
Member	Rick Morehouse, Scottsbluff Term Expires January 1, 2014
Member	Frank Reida, Omaha Term expires January 1, 2015

STAFF

Executive Director and General Counsel	Timothy J. Texel
Business Manager	Rebecca Hallgren
Paralegal	Sara Hayek

EXPENDITURE REPORTS

	Fiscal Year 2010-2011	Fiscal Year 2011-2012
PERSONAL SERVICES		
Salaries, wages, and per diem	<u>172,427.47</u>	<u>183,426.74</u>
TOTAL	172,427.47	183,426.74
 OPERATING EXPENSES		
Postage	2,284.33	1,376.57
Communications	3,428.78	3,365.01
Data Processing Expense	0.00	0.00
Publications & Printing	4,825.58	5,759.45
Awards	7.33	252.95
Dues and Subscriptions	3,372.47	4,220.04
Conference Registrations	805.00	2,960.00
Job Applicant Expense	0.00	15.00
Rent Expense - building	8,569.08	8,655.36
Rent Depreciation Surcharge	3,759.96	3,775.68
Repair and Maintenance - Building	0.00	0.00
Repair and Maintenance - Office Equipment	0.00	200.25
Repair and Maintenance - Data Processing	113.63	370.51
Office Supplies	1,651.99	2,276.77
Miscellaneous Sup. Exp.	0.00	0.00
Non-Capitalized Equipment	8,232.88	3,739.98
Food Expense	26.20	160.93
Accounting and Auditing Services	1,099.75	1,874.25
Legal Related Expenses	4,309.58	348.05
SOS Temp Service - Personnel	0.00	432.98
Temp Serv - Outside	0.00	0.00
Engineer & Architectural Services	54,000.00	162,000.00
Management Consultant Services	7,568.00	3,500.00
Software -- New Purchase	0.00	986.34
Insurance Expense	12.99	14.91
Surety & Notary Bonds	0.00	70.00
Other Operating Expense	<u>40.00</u>	<u>41.00</u>
TOTAL	104,107.55	206,396.03
 TRAVEL EXPENSE		
Board and Lodging	3,512.71	2,391.64
Meals - One Day Travel	0.00	0.00
Commercial Transportation	1,267.50	973.20
State-Owned Transportation	694.12	0.00
Personal Vehicle Mileage	7,326.62	5,890.15
Miscellaneous Travel	<u>179.50</u>	<u>224.10</u>
TOTAL	12,980.45	9,479.09
 GRAND TOTAL	 289,515.47	 399,301.86

STATISTICAL SUMMARY OF BOARD ACTIVITIES

July 1, 2010, to June 30, 2012

	<u>2010-2011</u>	<u>2011-2012</u>
Number of Regular Board Meetings -----	11	10
Hearings Before the Power Review Board:		
Complaints -----	1	1
Hearings -----	4	1
Construction Applications:		
Approved New Generation Facilities ¹ -----	0	1
Microwave Communications Facilities ² -----	0	1
Transmission Lines Over ½ Mile Outside Applicant's Service Area ³ -----	11	3
TOTAL Approved Generation & Transmission Applications to Date -----	1,583	1,588
Generation & Transmission Applications Denied In Current Biennial Period -----	1	1
TOTAL Denied Applications to Date -----	27	28
Transmission Lines ½ Mile or Less Outside a Power Supplier's Service Area ⁴ -----	18	22
TOTAL Lines Approved to Date -----	1941	1963
Applications Withdrawn or Dismissed to Date -----	75	76
Amendments to Service Area Agreements and Public Power District Charters:		
Retail Service Area Modifications -----	7	7
TOTAL Retail Service Area Agreements -----	417	417
Wholesale Service Area Agreement Modifications -----	0	0
TOTAL Wholesale Service Area Agreements -----	22	22
Petitions to Amend Public Power District Charters ⁵ -----	2	11

¹ During the July 1, 2010 through June 30, 2012, biennial period the Board approved 1 application for a generation facility \$4,648,497.

² During the July 1, 2010 through June 30, 2012, biennial period the Board approved one application for a microwave facility for an estimated cost of \$445,000.

³ During the July 1, 2010 through June 30, 2012, biennial period the Board approved 14 applications for transmission lines for an estimated total cost of \$44,470,520.

⁴ Applications for construction of transmission lines one-half mile or less outside a power supplier's service area do not require formal approval by the Board if owners of electric lines within one-half mile of the proposed extension consent to the project. An application must still be filed with the Board to satisfy notice requirements pursuant to Title 285, Nebraska Administrative Code, Chapter 2, section 3. During the July 1, 2010 through June 30, 2012, biennial period the Board received 30 application that did not require a formal vote for an estimated cost of \$552,052.

⁵ Public power district charters are also commonly referred to as "petitions for creation." Once a district's petition for creation is approved, it becomes the district's charter. See Custer Public Power District v. Loup River Public Power District, 162 Neb. 300, 75 N.W.2d 619 (1956).

GENERATION FACILITIES

PRB-3661-G
Municipal Energy Agency of Nebraska

On August 17, 2011 an application was submitted by the Municipal Energy Agency of Nebraska for authority to acquire an additional approximate .25 percent of the output of the Walter Scott Energy, Jr. Energy Center Unit Four generation facility. This is a coal-fired electric generation facility located near Council Bluffs, Iowa. The application was designated as PRB-3661-G. The application was set for hearing on September 9, 2011. A Notice of Hearing was sent to Nebraska Public Power District, Omaha Public Power District, Lincoln Electric System and Municipal Energy Agency of Nebraska. A public Notice was published in the *Omaha World Herald* on August 24, 2011. At the Board's September 9, 2011 public meeting, the Board voted to approve PRB-3661-G.

PRB-3662-G
Edison Mission Energy
Santa Ana, California

On August 29, 2011, an application was filed by Edison Mission Energy, headquartered in Santa Ana, California, for authority to acquire the TPW Petersburg 40.5 megawatt wind generation facility located near the Village of Petersburg in Boone County, Nebraska. The issue of this transaction was also discussed during the Board's August 2011 public meeting. An informal opinion was issued by the Board on August 22, 2011 addressing the Board's authority over this transaction. In its informal opinion, the Board determined that based on Nebraska law it lacked jurisdiction over the acquisition. Due to concerns from the investors in this transaction, a formal application was submitted so that a written order might be received. A Notice of Hearing was sent to Nebraska Public Power District, Omaha Public Power District, TPW Petersburg LLC, Laredo Ridge Wind LLC, Morgan Stanley Renewable Development Fund LLC, and Third Planet Wind LLC. A Public Notice was published in the *Petersburg Press* on August 31, 2011. On September 8, 2011, OPPD filed a Protest asserting that the Board did not have authority over this transaction and that the informal opinion stated the Board's jurisdiction correctly. On September 8, 2011, NPPD filed a Protest asserting the fact that the PRB has no jurisdiction over the transaction and asked the Board to affirm the informal opinion. At the Board's public meeting on September 9, 2011, the Board voted to adopt its informal opinion issued on August 22, 2011 and dismiss PRB-3662-G on the grounds it lacked jurisdiction over the transaction.

MICROWAVE COMMUNICATION FACILITIES

PRB-3671-M
Eastern Nebraska Public Power Consortium

On November 10, 2011, the Eastern Nebraska Public Power Consortium (Consortium) filed an application with the Board to construct or install several microwave communication towers. The application was designated “PRB-3671-M.” The Consortium is comprised of Stanton County Public Power District and Cuming County Public Power District. The Consortium was formed under the Nebraska Interlocal Cooperation Act (Neb. Rev. Stat. sections 13-801 to 13-827). Notice of the application and opportunity to object or protest was sent via certified mail to all common carrier communications companies registered with the Nebraska Public Service Commission as operating in the applicable area. The notice was sent to Great Plains Communications of Blair, Nebraska, Stanton Telecom, Inc. of Stanton, Nebraska, Skywave Wireless, Inc. of West Point, Nebraska and Century Link QCC of Minneapolis, Minnesota. The Board did not receive any protests or objections to the application. The Board did receive a letter from the Nebraska Telecommunications Association (NTA) expressing its concern. The letter stated that NTA was concerned whether entities subject to the PRB’s oversight jurisdiction should have a responsibility to investigate the ability of regulated carriers to provide the proposed service by the same or alternate methods at the same or lower cost than the project proposed by the applicant. NTA did not want to object or protest, but to only express its concerns over this issue. Under Neb. Rev. Stat. section 70-1021 the Board must find the following in order to approve a microwave communication application: 1) in the judgment of the PRB the district is not receiving the required quality of service, and will not within a reasonable time receive the required quality of service from the regulated carriers involved, 2) regulated carriers would not provide the required quality of service by the same or alternate methods, at the same or lower costs to the district, and 3) such construction would be in the public interest. As required by Neb. Rev. Stat. section 13-807(3), the PRB consulted with Nebraska Game and Parks Commission to ensure that an approval of this application would not harm any threatened or endangered species or critical habitat. The Commission determined that there were no state listed threatened or endangered species in the area of the proposed facilities and approval would have no effect on said species. The Consortium received a “Smart Grid Investment Grant” administered by the U.S. Department of Energy. The Consortium must match half of the funds given. Since both Cuming County Public Power District and Stanton County Public Power District are smaller rural districts working together, this has allowed them to benefit in receiving these funds. A hearing was waived on the matter due to no protests or objections being filed with the Board. During the Board’s public meeting on January 13, 2012, the board voted to approve application PRB-3671-M. The cost of the project is estimated at \$445,000. The project is estimated to be completed in May 2012. At the time this report was prepared a completion statement was not on file.

**TRANSMISSION LINE APPLICATIONS
REQUIRING BOARD APPROVAL**

PRB-3608
City of Fairbury, Fairbury Municipal Light and Power

On June 7, 2010, The City of Fairbury filed an application for authorization to construct 8 miles of 15 kV distribution line in Jefferson County, Nebraska. Only a portion of the total project would be located outside the City's retail service area. The proposed line would run along Highway 136 from 2 ½ miles west of the Village of Harbine eastward to the unincorporated community of Ellis. The only part of the project requiring Board approval is a portion that travels approximately 2 ½ miles between two segments of the City's service area. The portion between the City's service area segments would be located in Norris PPD's retail service area. A Notice of Hearing was sent to Norris PPD and Nebraska PPD on June 8, 2010. Pursuant to the Board's Rules of Practice and Procedure, Norris and Nebraska PPD had 20 days in which to file a Protest. Norris PPD timely filed a Protest on June 21. Nebraska PPD submitted a Consent and Waiver form consenting to approval of the application and waived further notice in the matter. In accordance with Neb. Rev. Stat. section 37-807(3), the Board consulted with Nebraska Game and Parks Commission to ensure that an approval of the project would not jeopardize any threatened or endangered species. The Commission responded in a letter dated July 8, 2010, that the proposed project is in the range of the massasauga, a threatened species of rattlesnake. There are no records of any threatened or endangered species in the specific area where the proposed line would be located, though, so the Commission determined that the project would have "no effect" on any state-listed threatened or endangered species. An evidentiary hearing was held on August 20, 2010. The Board tabled action on the matter until its public meeting on September 17, 2010, and asked the parties to submit briefs by September 3. At the Board's public meeting on September 17, 2010, the Board voted to approve PRB-3608 with a vote of 4 to 0 with one member absent. The estimated completion of this project is in October 2011. The estimated cost of the project is \$210,000. At the time this report was prepared no completion statement was on file

PRB-3621
City of Minden, Nebraska

On April 22, 2010, the City of Minden filed an application for authorization to construct 2.12 miles of 69 kV transmission line and approximately 250 feet of 34.5 kV transmission line in Kearney County, Nebraska. The proposed line would replace an existing underground transmission line due to the conditions and age of the underground conductor. This line will continue to provide normal service to the City of Minden. The path of the construction would enter the Southern Public Power District's service area through two locations. Approximately 250 feet of the proposed 69 kV line is located in sections 31 and 32, township 7, range 14, starting at the existing Nebraska PPD's 115 kV/34.5 kV substation. Also, approximately 3,400 feet of the overhead line in section 7, township 6, range 14, will be in Southern PPD's service area. A Consent and Waiver form from Nebraska PPD was filed with the application consenting to the construction of the line. A Notice of Hearing was sent via certified mail to the City, Southern PPD and NPPD on April 24. Southern PPD timely filed a Protest on May 7, 2010. NPPD later submitted a letter withdrawing its Consent and Waiver, but did not object to approval of the application. In accordance with Neb. Rev. Stat. section 37-807(3), the Board consulted with the Nebraska Game and Parks Commission to ensure that an approval of the project would

not jeopardize any threatened or endangered species. The Commission responded in a letter dated June 9, 2010, that it determined the project will have “no effect” on any state-listed threatened or endangered species. On Wednesday, July 21, 2010, Minden filed an amendment to its application. The amendment changed Paragraph 7 of the original application, which deals with the estimated cost of the project. The new paragraph stated the estimated cost of the project is \$500,000, with no financial contribution by any customer. The Board accepted the amendment to PRB-3621 at its July public meeting. On July 26, Brian and Barb Petersen filed a Petition for Intervention. On August 2, Minden filed an Objection to the Petition for Intervention. An evidentiary hearing was held on August 20, 2010. The Board heard evidence on the issue of whether the Petersens had standing to intervene. During the Board’s public meeting later that same day, the Board granted the Petitioners’ right to intervene. The Board tabled the decision on the matter until the Board’s September 17, 2010 public meeting. The Board asked the parties to submit briefs by September 3. At the Board’s September 17, 2010 public meeting, the Board voted to deny application PRB-3621. The vote for the decision was 3-no, 1 abstain and 1 absent. On October 15, 2010, the applicant filed an appeal with the Nebraska Court of Appeals. The case was removed to the Supreme Court’s docket. On December 23, 2011, the Supreme Court issued its opinion. The opinion stated the evidence supports the Board’s decision and it was not arbitrary or unreasonable. In conclusion, it was determined the Board did not err in its decision that Minden’s line was not the most economical and feasible line and that it would be unnecessarily duplicative of Southern PPD’s existing line. The case number for reference is case No. S-10-1055. In re application of City of Minden, Nebraska.

PRB-3632
Nebraska Public Power District

On July 23, 2010, Nebraska PPD filed an application for authority to construct two 115 kV transmission lines and a substation in Dakota County, Nebraska. The northern line would pass through approximately 3 miles of Northeast Nebraska Public Power District’s service area and approximately 4 miles of the City of South Sioux City’s service area. The southern line would pass through approximately one-half mile of the City of Dakota City’s service area, and approximately 1.5 miles would be located in South Sioux City’s service area. The new substation will also be located in South Sioux City’s service area. Both lines will run from the proposed new substation one mile northeast of Dakota City to NPPD’s existing Twin Church Substation approximately 4 miles west of Dakota City. On August 6, 2010, a Notice of Hearing was sent via certified mail to NPPD, Northeast NE PPD, South Sioux City and Dakota City. In accordance with Neb. Rev. Stat. § 37-807 (3), the Board consulted with the Nebraska Game and Parks Commission to ensure that an approval of the project would not jeopardize any threatened or endangered species. The Commission provided a letter stating that the proposed project will have “no effect” on any state-listed threatened or endangered species. On August 17, 2010, a Petition for Intervention was filed by the James Neff Kramper Family Farm Partnership. The Board found that the Petitioners did not have standing, since the basis for the Intervention dealt with routing and condemnation issues, which are beyond the Board’s jurisdiction. At the Board’s public meeting held August 17, 2010, the Board voted to approve PRB-3632. The project is estimated to be completed in the summer of 2012 with a cost of \$27,000,000. At the time this report was prepared there was no completion statement on file

PRB-3633
Loup River Public Power District

On August 16, 2010, Loup River PPD filed an application requesting approval to construct 3.25 miles of 34.5 kV transmission line. The line would be located in Platte County, Nebraska about one-half mile northwest of the City of Columbus. The line would create a new tie between the Columbus West Substation and the Maple Park Substation. In the application, Loup River PPD stated that the project is needed to increase capacity to meet growing demands of the Columbus customers. The line is located in the Cornhusker PPD's retail service area. Cornhusker PPD submitted a Consent and Waiver form, consenting to approval of the project and waiving further notice in the matter. In accordance with Neb. Rev. Stat. section 37-807(3), the Board consulted with the Nebraska Game and Parks Commission to ensure that approval of the project would not jeopardize any threatened or endangered species. The Commission responded in a letter dated September 13, 2010, that the project is in the range of the Interior Least Tern, Piping Plover, River Otter, White Lady's Slipper, Western Prairie Fringed Orchid, and Whooping Crane. Although these state-listed species are listed as being in the general area, there is no suitable habitat for these species within the project area. The Commission therefore determined that the project "may affect but is not likely to adversely affect" any state-listed threatened or endangered species. The Commission had no objection to approval of the project. At the Board's September 17, 2010 public meeting the Board voted to approve PRB-3633. The project was completed on July 8, 2010 at the cost of \$800,000.

PRB-3634
Rolling Hills Electric Cooperative, Mankato, Kansas

On October 13, 2010, Rolling Hills Electric Cooperative, headquartered in Mankato, Kansas filed an application requesting authority to construct approximately 4,850 feet of 7.2 kV 3-phase distribution line to serve a new grain bin facility in southern Thayer County, Nebraska. The construction is located in the service area of South Central Public Power District. A signed Consent and Waiver Form was received from South Central PPD consenting to the construction and waiving a hearing. South Central PPD also indicated it is its understanding that this application is only for three-phase service to a grain drying bin, and no other existing loads would be served by the proposed line. South Central PPD currently provides single-phase service to other facilities at this location. Pursuant to Neb. Rev. Stat. section 37-807(3), the application was forwarded to the Nebraska Game and Parks Commission for consultation. In a letter dated November 17, 2010, the Commission stated that the proposed construction will have "no effect" on any state-listed threatened or endangered species in the State of Nebraska. At the Board's November 19, 2010 public meeting the Board voted to approve PRB-3634. The project is estimated to be completed in October of 2010. The estimated cost is \$35,000. At the time this report was prepared, no completion statement was on file.

PRB-3636
Nebraska Public Power District

On October 29, 2010, NPPD filed an application requesting authority to construct a 115 kV substation in Hall County, Nebraska. The substation would be approximately 5 miles north and 3 miles west of the City of Grand Island. Grand Island asked NPPD to provide an additional transmission source for the City's substation F, located in the northwest part of Grand Island. The substation would be located in Southern Public Power District's service area. Southern PPD submitted a signed Consent and Waiver Form consenting to the construction and waiving a hearing. Pursuant to Neb. Rev. Stat. section 37-807(3), the application was forwarded to the Nebraska Game and Parks Commission for consultation. In a letter dated December 7, 2010, the Commission stated that the proposed construction is in the known range of the whooping crane, and there are records of whooping cranes in the vicinity of the substation's proposed location. NPPD agreed to conduct surveys for whooping cranes if construction is being done during the cranes' migration periods. NPPD also agreed to halt construction activity if a whooping crane comes within ½ mile of the construction zone and that construction will not begin again until the crane has moved more than ½ mile from the construction area. The Commission also stated that the project is within the range of the western prairie fringed orchid and the small white lady's slipper, but there are no records of those plants or suitable habitat in the project area. Therefore, based on the agreements with NPPD, the Commission had no objections to the approval of the proposed project. At the Board's December 17, 2010 public meeting the Board voted to approve PRB-3636. The project is estimated to be completed in the fall of 2011. The estimated cost for the project is \$4,000,000. At the time this report was prepared, no completion statement was on file.

PRB-3637
Village of Morrill

On December 6, 2010, the Village of Morrill filed an application requesting authority to construct approximately three-quarters of one mile of 7.2 kV single-phase distribution line. The line would be located in section 14, Township 24 North, Range 57 West, in Sioux County, Nebraska. The project is located in the service area of Roosevelt Public Power District. Roosevelt PPD submitted a signed Consent and Waiver form consenting to the construction and waiving a hearing. Pursuant to Neb. Rev. Stat. section 37-807(3), the application was forwarded to the Nebraska Game and Parks Commission for consultation. In a letter dated December 10, 2010, the Commission stated that the proposed construction is in the range of the swift fox and there are records of swift fox in the vicinity of the project. Morrill conducted a survey for swift fox dens, which consists of walking the proposed route of the project and checking for evidence of active swift fox dens. Morrill has also agreed that if the construction does not occur within a two week time-frame of the initial survey, another survey would be conducted prior to commencement of construction. Morrill will notify the Commission if it finds evidence of any active dens. Based on this agreement, the Commission has no objection to the approval of the proposed project. At the Board's December 17, 2010 public meeting the Board voted to approve PRB-3637. The project is estimated to be completed in November of 2010. The estimated completion cost is \$10,000. At the time this report was prepared, no completion statement was on file.

PRB-3640
Nebraska Public Power District

On December 27, 2010, NPPD filed an application requesting authority to construct nine miles of 115 kV transmission line in Custer County, Nebraska. The line will be located east and northeast of the City of Broken Bow. The line will start at the 115 kV substation near Broken Bow and connect to a new substation that will be built approximately five miles northeast of Broken Bow. The line will provide transmission infrastructure for an 80 MW wind-powered electric generation facility. The transmission line would be located in Custer Public Power District's and Broken Bow's service areas. Both Custer PPD and Broken Bow submitted signed Consent and Waiver Forms consenting to the construction and waiving a hearing. Pursuant to Neb. Rev. Stat. section 37-807(3), the application was forwarded to the Nebraska Game and Parks Commission for consultation. In a letter dated January 18, 2011, the Commission stated that the proposed construction is in the known range of the small white lady's slipper, western prairie fringed orchid and whooping crane. There are no records of the small white lady's slipper or the western prairie fringed orchid in the area, nor is there suitable habitat. There are records of whooping cranes in the vicinity of the proposed transmission line's location. NPPD agreed to place bird diverters on the portion of the line that the Commission determines raises concerns. Therefore, based on the agreements with NPPD, the Commission has no objections to the approval of the proposed project. At the Board's January 21, 2011 public meeting the Board approved PRB-3640. The project is estimated to be completed in June of 2012. The estimated cost of the project is \$4,650,000. At the time this report was prepared, no completion statement was on file.

PRB-3643
City of Grand Island

On January 27, 2011 Grand Island filed an application requesting authority to construct approximately seven miles of 115 kV transmission line in Hall County, Nebraska. The line would be located northwest of Grand Island. It would connect the City's substation F, located in the northwest part of the City, and NPPD's St. Libory substation. Most of the line would be located in Southern Public Power District's service area. Southern PPD submitted a Consent and Waiver Form consenting to the construction and waiving a hearing. Other potentially interested parties that were provided notice of the application were NPPD and Hastings Utilities. Both NPPD and Hastings Utilities submitted a Consent and Waiver form, also. Due to the size and length of the transmission line, a public notice of filing and hearing date, and an opportunity to Intervene, was also published in the *Grand Island Independent* newspaper on February 8, 2011. A hearing was held on February 18, 2011. Pursuant to Neb. Rev. Stat. section 37-807(3), the application was forwarded to the Nebraska Game and Parks Commission for consultation. In a letter dated February 14, 2011, the Commission stated that the proposed construction is in the known range of the whooping crane, and there are records of whooping cranes in the vicinity of the line's proposed route. Grand Island has agreed to conduct daily surveys for whooping cranes if construction is being done during the cranes' migration periods. Grand Island has also agreed to halt construction activity if a whooping crane comes within one-half mile of the construction zone, and that construction will not resume until the crane has moved more than one-half mile from the construction area. The Commission also stated that the project is within the range of

the western prairie fringed orchid and the small white lady's slipper, but there are no records of those plants or suitable habitat in the project area. Therefore, based on the agreements with Grand Island, the Commission has no objection to the approval of the proposed project. At the Board's public meeting on February 18, 2011, the Board voted to approve PRB-3643. The project is estimated to be completed in December 2012. The estimated completion cost is \$7,000,000. At the time this report was prepared, no completion statement was on file.

PRB-3650
City of Fairbury, Fairbury Light and Water Department

On April 14, 2011 the City of Fairbury's Department of Light and Water filed an application requesting authority to construct 2,890 feet of 13.2 kV distribution line in Jefferson County. The application included a letter from the customer requesting Fairbury to provide the three-phase service. The service is located in the service area of Norris Public Power District. Norris submitted a signed Consent and Waiver form consenting to the service and waiving a hearing. The Board consulted with the Game and Parks Commission as required by section 37-807(3). The Board received a letter from the Commission dated April 14, 2011 stating that there are no records of threatened or endangered species in the vicinity of the proposed project. The letter stated that the project will have "no effect" on any state-listed threatened or endangered species. At the Board April 22, 2011, public meeting the Board voted to approve PRB-3650. The project is estimated to be completed in September 2011. The estimated completion cost is \$13,000. At the time this report was prepared, no completion statement was on file.

PRB-3656
Stanton County Public Power District

On June 1, 2011 the Stanton County Public Power District filed an application for authority to construct .75 mile of 69 kV sub-transmission line in Madison County. Exhibit A-1 of the application shows the location of the proposed construction. The line outside Stanton County PPD's territory is located in the Elkhorn Rural Public Power District's service area. Elkhorn RPPD submitted a signed Consent and Waiver form consenting to the service and waiving a hearing. The proposed line would replace an existing Stanton County PPD line. The existing line is aging and needs to be replaced. The line is being relocated along a highway in order to allow for easier maintenance access. The Board consulted with the Game and Parks Commission as required by Neb. Rev. Stat. section 37-807(3). The Board received a letter from the Commission the day before the meeting stating that there are no records of threatened or endangered species in the vicinity of the proposed project. The letter stated that the Commission believes the project will have "No Effect" on any state-listed threatened or endangered species. Since this line involved a short distance, and was being moved to the right-of-way along a highway it was easier for the Commission staff to review it quickly. At the Board's June 10, 2011 public meeting the Board voted to approve PRB-3656. The project is estimated to be completed in December 2011. The completion cost is estimated at \$135,000. At the time this report was prepared, no completion statement was on file.

PRB-3667
Loup River Public Power District

On October 6, 2011, the Loup River PPD filed an application for authority to rebuild 2.6 miles of 34.5 kV subtransmission line in Nance County, west of the Village of Monroe. A map labeled “Exhibit A” shows with more specificity where the project is located. The project will increase the existing line’s capacity, and add a shield wire. The existing line is located in Cornhusker PPD’s service area. A signed Consent and Waiver form was received with the application. Pursuant to Neb. Rev. Stat. section 37-807(3), the Board consulted with the Nebraska Game and Parks to assure that the Board’s approval of PRB-3667 would no effect any threatened or endangered species. A letter dated November 17, 2011, from the Game & Parks states that the proposed project would have “no effect” on any state listed threatened or endangered species. At the Board’s November 18, 2011 public meeting the Board voted to approve PRB-3667. The project is estimated to be completed in April 2012. The estimated cost of the project is \$292,000. At the time this report was prepared, no completion statement was on file.

PRB-3674
Southwest Public Power District

On February 13, 2012, the Southwest PPD filed an application requesting authority to construct $\frac{3}{4}$ mile of 7.2 kilovolt distribution line to serve an irrigation well and pivot. The service will be located in section 9, township 8 north, range 33 west, Hayes County, Nebraska. Midwest Electric Cooperative Corporation submitted a signed Consent and Waiver form consenting to the construction and waiving a hearing. A letter was sent to the Game and Parks Commission for consultation according to Neb. Rev. Stat. section 37-807(3). A letter from the Commission dated February 24, 2012 states that the project is in the range of the whooping crane and swift fox, but there are no records of those or other threatened or endangered species near this project location and no suitable habitat in the project area. Therefore, the Commission determined that this project will have “No Effect” on any state listed threatened or endangered species. At the Board’s March 9, 2012 public meeting the Board voted to approve PRB-3674. The estimated completion time for the project is May of 2012. The cost of the project is estimated at \$38,520. At the time this report was prepared, no completion statement was on file.

PRB-3676
Twin Valleys Public Power District

On March 9, 2012, the Twin Valleys Public Power District filed an application requesting authority to construct 2.49 miles of 7.2 kilovolt distribution line in Furnas County near the Village of Oxford. This project is actually replacing an existing line by reconductoring and only a portion of it will be moved. The Village of Oxford submitted a signed Consent and Waiver form consenting to the construction and waiving a hearing. A letter was sent to the Nebraska Game and Parks Commission for consultation according to Neb. Rev. Stat. section 37-807(3). A letter from the Commission dated April 12, 2012 states that the project is in the range of the whooping crane and there are records indicating that there has been sightings within two miles of the project. Twin Valleys PPD coordinated with the Commission to determine what was needed to be done in order to avoid affecting whooping cranes. The application indicated the District wanted to begin construction during the whooping crane migration period of March 23 to May 10. To avoid impact on whooping cranes, Twin Valleys PPD agreed to delay commencement of construction activities in the project area until after May 10. With this agreement between the utility and the Commission, the Commission determined that the project will have “no effect” on any state listed threatened or endangered species. The Commission also indicated that due to the height and location of the distribution line it was not necessary to install bird flight diverters on the line. At the Board’s April 13, 2012 public meeting the Board voted to approve PRB-3676. The estimated completion date is July of 2012. The estimated cost of the project is \$127,000.

RETAIL SERVICE AREA AGREEMENTS

SAA 282-10-A
City of Hastings
Nebraska Public Power District

On September 14, 2010, a joint application was filed by NPPD and the City of Hastings to amend retail service area agreement 282. The application was designated as SAA 282-10-A. NPPD currently holds the service area rights to the territory including and surrounding the area of the Central Community College near Hastings. In March 2001, NPPD and Hastings entered into an agreement whereby Hastings would purchase the distribution facilities in and around the College from NPPD. The agreement allowed Hastings to pay for the facilities over a ten-year period. On March 1, 2010, Hastings made its final payment, thus completing its purchase of the facilities, after which NPPD issued a Bill of Sale. The area to be transferred is described in Exhibit B of the application and outlined on the map labeled Exhibit A. At the Board's October 15, 2010 public meeting, the Board approved SAA 282-10-A.

SAA 267-10-A
City of Pierce
Northeast Nebraska Public Power District

On October 8, 2010, a joint application was filed by the City of Pierce and Northeast Nebraska Public Power District to amend retail service area agreement 267. The amendment would address which utility has the right to serve certain customers and transfer those customers from Pierce to Northeast NE PPD. The amendment does not change any service area boundary lines. This service area agreement amendment addresses the issues involved in application PRB-3624, which was previously filed by the City of Pierce in order to serve a new center pivot to be installed by Mr. Todd Kumm inside Northeast NE PPD's service area. The Board denied PRB-3624. Mr. Kumm requested Pierce to remove a distribution line located in a section that he irrigates so he could install a center pivot irrigation system. The map labeled "Exhibit A" shows the addition of the six customers that Northeast NE PPD will serve. The customers are indicated as solid circles in the southeast corner of section 14 and the northeast corner of section 23. At the Board's October 15, 2010 public meeting, the Board voted to approve SAA 267-10-A.

SAA 334-10-A
City of Wahoo
Omaha Public Power District

On November 4, 2010, a joint application was filed by the City of Wahoo and the Omaha Public Power District to amend their retail service area agreement. The application would transfer from OPPD to Wahoo customers that OPPD is currently serving within Wahoo's service area. During previous annexations, OPPD retained the right to continue to serve these customers in Wahoo's service territory. The customers

involved include a mobile home trailer park, a Nebraska Department of Roads maintenance facility, the City of Wahoo's welcome sign and two residences. A list of the customers involved was included in the application as Exhibit C. Exhibit A was a map showing the location of the loads to be transferred. At the Board's November 19, 2010 public meeting, the Board voted to approve SAA 334-10-A.

SAA 329-10-A
City of Hastings
Southern Public Power District

On November 24, 2010, a joint application was filed by the City of Hastings and the Southern Public Power District to amend retail service area agreement 329. This application was made necessary as a result of another recently approved application, SAA 282-10-A. In SAA 282-10-A, NPPD transferred to Hastings the service area including and around the Central Community College. Now that Hastings holds the service area rights to the territory including and near the College, the border around the College is now between Hastings and Southern PPD instead of NPPD and Southern PPD. Due to this, service area agreement 329 between Hastings and Southern PPD needed to be amended to reflect the new parties sharing that portion of boundary. The amendment does not involve the transfer of territory, just the acknowledgement of the new parties sharing the boundary. At the Board's December 19, 2010 public meeting, the Board voted to approve SAA 329-10-A.

SAA 7-11-A
Southern Public Power District
Nebraska Public Power District

On January 24, 2011, a joint application was filed by the Nebraska Public Power District and the Southern Public Power District to amend retail service area agreement 7. This application was made necessary as a result of another recently approved application, SAA 282-10-A. In SAA 282-10-A, NPPD transferred to the City of Hastings the service area including and around the Central Community College. Now that Hastings holds the service area rights to the territory including and near the College, the border around the College is now between Hastings and Southern PPD instead of NPPD and Southern PPD. Due to this, S.A.A. 7 between NPPD and Southern PPD needed to be amended to reflect the new parties sharing that portion of boundary. The amendment does not involve the transfer of territory, just the acknowledgement of the new parties sharing the boundary. At the Board's February 18, 2011 public meeting, the Board voted to approve SAA 7-11-A.

SAA 48-11-A
Highline Electric Association
Nebraska Public Power District

On May 11, 2011, a joint application was filed by the Nebraska Public Power District and the Highline Electric Association to amend retail service area agreement 48. The Village of Venango is part of NPPD's retail service area. Venango previously annexed a strip of territory on its southern side. When a municipality annexes territory it has a right to serve the area if an application to amend its service area is filed within one year of the annexation. Per the PRB's previous rulings, the power supplier who is holding the service area rights to the municipality acts as the municipality for purposes of filing the application. Venango annexed the new territory in July 2010, which was less than one year prior to the filing of this application. Exhibit A-1 shows the annexed territory, Exhibit A-2 is a metes and bounds description of NPPD's new service area border with Highline around Venango, and Exhibit B is a copy of the annexation ordinance. At the Board's June 10, 2011 public meeting, the Board voted to approve SAA 48-11-A.

SAA 252-11-A
Cornhusker Public Power District
Loup River Public Power District

On June 2, 2011, a joint application was filed by the Loup River Public Power District and the Cornhusker Public Power District to amend retail service area agreement 252. This amendment was based on an annexation. The Village of Humphrey is part of Loup River PPD's retail service area. Humphrey previously annexed a strip of territory on its eastern side. Humphrey annexed the territory more than a year ago, but Cornhusker PPD is consenting to the transfer in this joint application. Exhibit B shows the portion of the annexed territory that extends into Cornhusker PPD's territory. The exhibits have light blue highlights indicating the area to be transferred. Exhibit C shows Loup River PPD's entire service area around Humphrey, including the area to be transferred in this amendment. At the Board's June 10, 2011 public meeting, the Board voted to approve SAA 252-11-A.

SAA 243-11-A
City of Lexington
Dawson Public Power District

On August 4, 2011, the Dawson Public Power District and the City of Lexington filed a joint application to amend retail Service Area Agreement 243. Lexington previously annexed a strip of territory on its southern edge. When a municipality annexes territory it has the right to include the area in its service area if it files an application to amend its service area and incorporate the annexed territory within one year of the annexation. A map labeled Exhibit A-1 shows the annexed territory. Pages 2

and 3 of Exhibit A-1 provides a metes and bounds description of the annexed territory. At the Board's August 12, 2011, public meeting, the Board voted to approve SAA 243-11-A.

SAA 198-11-A
Village of Stuart
Niobrara Valley Electric Membership Corporation

On August 8, 2011, the Niobrara Valley Electric Membership Corporation and the Village of Stuart filed an application to amend retail Service Area Agreement 198. Stuart annexed a strip of territory located on the southeast edge of its service area on March 29, 2011. When a municipality annexes territory it has the right to acquire the service area rights to the annexed territory if it files an application to amend its service area within one year of the annexation. A map labeled Exhibit "B" shows the annexed territory. Exhibits "C" and "D" are copies of the annexation ordinance. Stuart agreed to pay Niobrara Valley EMC \$8,499. The payment is for infrastructure in the annexed area and to compensate Niobrara Valley EMC two and one-half times the loss of annual revenue for a customer in the area that would be transferred. At the Board's September 9, 2011 public meeting the Board voted to approve SAA 198-11-A.

SAA 331-11-A
City of Beatrice
Norris Public Power District

On October 5, 2011, the City of Beatrice and the Norris Public Power District filed a joint application to amend retail Service Area Agreement 331. Beatrice annexed territory located on the northern edge of its service area on March 21, 2011. When a municipality annexes territory, it has the right to acquire the service area rights to the annexed territory if it files an application to amend its service area within one year of the annexation. A map labeled Exhibit "A-2" shows the annexed territory, outlined and crosshatched in light green. Exhibit "A-1" is a metes and bounds description of the annexed territory. There are no Norris facilities or customers in the annexed area, so there is no compensation involved. At the Board's October 14, 2011 public meeting the Board voted to approve SAA 331-11-A.

SAA 329-12-A
City of Hastings
Southern Public Power District

On February 27, 2012, the City of Hastings and Southern Public Power District filed a joint application to amend retail service area agreement 329. The application states that Hastings annexed territory that included a small part of the Central Community

College campus. A portion of the territory annexed was located in Southern PPD's service area. The amendment would transfer a strip of land described in exhibit 4, which is a copy of Hastings Ordinance 4279, and located along the northern right-of-way of Highway 6 from Southern PPD to Hastings' service area. At the Board's March 9, 2012, public meeting the Board voted to approve SAA 329-12-A.

SAA 318-12-A
City of Wahoo
Butler Public Power District

On April 5, 2012, the City of Wahoo and the Butler Public Power District filed a joint application to amend retail service area agreement 318. The application states that Wahoo annexed territory north of the City on May 26, 2011. A portion of the territory annexed was located in Butler PPD's service area. The amendment would transfer a tract of land shown in a map labeled "Exhibit B." A copy of Ordinance 2061 was marked as "Exhibit A." At the Board's April 13, 2012 public meeting the Board voted to approve SAA 318-12-A.

SAA 267-12-A
City of Pierce
Northeast Nebraska Public Power District

On April 10, 2012, the City of Pierce and Northeast NE PPD filed a joint application to amend retail service area agreement 267. This is an implementation of the joint settlement agreement that was filed on April 10 in a complaint designated as C-45. Exhibit B is a map which creates a service area boundary around the Village of Foster. SAA 267-12-A clarifies that Pierce will hold the retail service area rights to the Village of Foster. A red line outlines the current corporate village limits of the Village of Foster, which is adopted as the new service area boundary between Pierce and Northeast NE PPD. The service area agreement amendment also indicates individual customers or loads and clarifies which party has the right to serve each load. The legend shows open circles as loads permanently assigned to Pierce. Circles with the bottom half filled in are those loads permanently assigned to Northeast NE PPD. Circles with the right half-filled in are loads that Northeast NE PPD conditionally retains the right to serve. Circles completely filled in are loads that Pierce conditionally retains the right to serve. The conditional loads are those that a utility is serving inside the other utility's retail service area, and can continue serving until the utility holding the service area rights to that location provides notice that it wants to take over that load. Exhibit C to the settlement agreement is a list of the loads and the legal description of their locations. SAA 267-12-A incorporates the changes agreed to by the parties in C-45 into S.A.A. 267. Attached to SAA 267-12-A is an exhibit designated as "Exhibit A." The map is the same map used in the settlement agreement, but was designated as "Exhibit B" in the settlement. At the Board's April 13, 2012 public meeting the Board voted to approve SAA 267-12-A.

SAA 105-12-A
City of Sidney

On March 23, 2012, the City of Sidney filed an application to amend retail service area agreement 105 which establishes the boundary between Sidney and the Wheat Belt Public Power District. An amended application was filed on April 26, and a second amended application was filed on May 1. The application is based on an annexation of territory on the south side of the City. A portion of the annexed territory is located in Wheat Belt PPD's retail service area. Since this is not a joint application, a Notice of Filing and Hearing Date was sent to Wheat Belt PPD. Wheat Belt PPD filed a formal Protest opposing the service area agreement amendment. Wheat Belt PPD's Protest alleged that the City had established service to a couple of small loads (light poles), inside Wheat Belt PPD's service area without consent prior to the annexation. The City is also claiming that a certain roadway right-of-way is included in the annexation by operation of law. On May 14, Wheat Belt PPD filed a Withdrawal of Protest. The Board approved the withdrawal of Wheat Belt PPD's pleading according to the Board's current Rules of Practice and Procedure, 285 NAC, Chapter 3, § 14. A joint settlement agreement was filed on May 12. At the Board's June 8, 2012 public meeting the Board voted to approve the second amended SAA 105-12-A.

**WHOLESALE
SERVICE AREA AGREEMENT
MODIFICATIONS**

The Power Review Board did not receive any applications to amend or create a wholesale service area agreement during this biennial period.

AMENDMENTS
TO
PUBLIC POWER DISTRICT'S CHARTERS

Norris Public Power District Charter Amendment 17

On June 2, 2010, the Norris Public Power District filed a Petition to amend its charter. The amendment would be the 17th amendment to the District's charter. The amendment would eliminate voting subdivision V, reducing the number of the District's directors from 12 to 11. The population in subdivision V would be redistributed amongst the other voting districts. Norris PPD decided to eliminate voting subdivision V and distribute its population amongst the remaining districts after the director representing the subdivision passed away. The population redistribution would be temporary. Once the 2010 census results are made available, the population figures for all the District's voting subdivisions would be analyzed, and the population will be redistributed to ensure the population in each of the District's subdivisions is as equal as reasonably possible. The Board is required by state law to publish a notice of the proposed charter amendment in two local newspapers for three consecutive weeks. Notice of the proposed charter amendment was published in the *Beatrice Daily Sun* and the *Lincoln Journal Star* newspapers on June 9, 16, and 23, 2010. The notice stated that any protests or objections were due by July 19. The Board did not receive any protests or objections to the proposed amendment. At the Board's July 27, 2010 public meeting, the Board voted to approve Norris Public Power District's Petition for Charter Amendment 17.

Northeast Nebraska Public Power District Charter Amendment 8

On January 12, 2011, Northeast Nebraska Public Power District filed a Petition to amend its charter. The amendment would reduce the number of directors and election subdivisions from 9 to 8. The amendment would change paragraphs 6 and 13 of the charter. As required by statute, the Board published notice in two local newspapers for three consecutive weeks. Notice was published in the *Wayne Herald* on January 20, 27 and February 3, 2011. Notice was also published in the *Norfolk Daily News* on January 19, 26 and February 2, 2011. The Notice set March 11 as the deadline for filing any protests or objections to the amendment. No protests or objections were filed with the Board. At the Board's March 18, 2011 public meeting, the Board voted to approve Northeast Nebraska Public Power District's Petition for Charter Amendment 8.

**North Central Public Power District
Charter Amendment 8**

On September 7, 2011, the North Central Public Power District filed a Petition to amend its charter. The amendment would update sections B and F of the District's charter in order to redistribute the population amongst the District's voting subdivisions based on the 2010 Census figures. As required by state law the Board published notice in at least 2 local newspapers for three consecutive weeks prior to acting on a charter amendment. The notice was published in the *Verdigre Eagle* on September 22, 29 and October 6, 2011. The notice was also published in the *Creighton News* on September 21, 28, and October 5, 2011. Any protests or objections were to be received prior to the Board's meeting on November 18, 2011. No protests or objections were filed concerning the Petition. During the Board's public meeting on November 18, 2011, the Board voted to approve the North Central Public Power District's Petition for Charter Amendment 8.

**South Central Public Power District
Charter Amendment 4**

On September 21, 2011, the South Central Public Power District filed a Petition to amend its charter. The amendment would update sections two and six of the District's charter in order to redistribute the population amongst the District's voting subdivisions based on the 2010 Census figures. As required by state law the Board published notice in at least 2 local newspapers for three consecutive weeks. The notice was published in the *Hastings Tribune* on September 28, and October 5, and 12, 2011. The notice was also published in the *Superior Express* on September 29, and October 6, and 13, 2011. No protests or objections were filed prior to the November 18, 2011 deadline. During the Board's public meeting on November 18, 2011, the Board voted to approve South Central Public Power District's Petition for Charter Amendment 4.

**Nebraska Public Power District
Charter Amendment 6**

On October 12, 2011, the Nebraska Public Power District filed a Petition to amend its charter. The amendment would update sections 3 and 7 of the District's charter in order to redistribute the population amongst the District's voting subdivisions based on the 2010 Census figures and to implement the statutory changes to Neb. Rev. Stat. §§ 70-603, 70-604.01, and 70-604.02 made by LB 53 (2009). As required by state law, the Board published notice of the proposed

changes in at least two newspapers with general circulation in the District's territory for three consecutive weeks. Due to the size and dispersion of NPPD's territory, NPPD requested that the Board publish notice in nine newspapers, including the larger cities that were directly affected by the voting changes set out in LB 53. The notice was published in the *Columbus Telegram*, the *Grand Island Independent*, the *Hastings Tribune*, the *Kearney Hub*, the *Lincoln Journal Star*, the *Norfolk Daily News*, the *North Platte Telegraph*, the *Scottsbluff Star-Herald*, and the *York News-Times*. The notice appeared in the November 2, 9, and 16 editions of all the newspapers. No protests or objections were filed concerning the Petition. Due to the difficulty in trying to implement the significant changes in time for the primary election certifications, NPPD requested that the changes not be made effective until January 3, 2013. On December 16, 2011, the Board voted to approve Nebraska Public Power District's Petition for Charter Amendment 6, but the changes would be effective January 3, 2013.

Norris Public Power District Charter Amendment 18

On October 20, 2011, the Norris Public Power District filed a Petition to amend its charter. The amendment would update sections 2 and 6 of the District's charter in order to redistribute the population amongst the District's voting subdivisions based on the 2010 Census figures. As required by state law, the Board published notice of the proposed changes in at least two newspapers with general circulation in the District's territory for three consecutive weeks. The notice was published in the *Lincoln Journal Star* and the *Beatrice Daily Sun* on November 9, 16 and 23, 2011. No protests or objections were filed concerning the Petition. On December 16, 2011, the Board voted to approve Norris Public Power District's Petition for Charter Amendment 18.

Loup River Public Power District Charter Amendment 8

On November 2, 2011, the Loup River Public Power District filed a Petition to amend its charter. The amendment would update sections B and F of the District's charter in order to redistribute the District's population amongst the District's voting subdivisions based on the 2010 Census figures. As required by state law, the Board published notice of the proposed changes in at least two local newspapers with general circulation in the District's territory for three consecutive weeks. Although it is only required to be published in two newspapers, due to the dispersion of its service area, Loup River PPD requested that the Board publish notice in 13 newspapers. The notice was published in the *Albion News*, *Clarkson*

Colfax County Press, Columbus Telegram, Fullerton Nance County Journal, Genoa Leader-Times, Howells Journal, Humphrey Democrat, Leigh World, Newman Grove Reporter, and the Petersburg Press on November 9, 16 and 23, 2011. The notice was also published in the *Schuyler Sun*, and the *St. Edward Advance* on November 10, 17, and 24, 2011. In addition, it was published in the *Cedar Rapids Press* on November 11, 18, and 25, 2011. No protests or objections were filed concerning the Petition. On December 15, 2011, the Board voted to approve Loup River Public Power District's Petition for Charter Amendment 8.

Omaha Public Power District Charter Amendment 6

On November 23, 2011, the Omaha Public Power District filed a Petition to amend its charter. The amendment would update sections 2 and 6 of the District's charter in order to redistribute the population amongst the District's voting subdivisions based on the 2010 Census figures. As required by state law, the Board published notice of the proposed changes in at least two newspapers with general circulation in the District's territory for three consecutive weeks. The notice appeared in the December 2, 9, and 16, 2011 editions of the *Blair Enterprise*. The notice was published in the *Nebraska City News-Press* on December 6, 13, and 20, 2011. It also was published in the *Omaha World Herald* on December 5, 12, and 19, 2011. No protests or objections were filed concerning the Petition. On December 1, OPPD filed an amendment to the Petition. The State's census figures were released in May and therefore the six month deadline for filing an amendment was at the end of November. The issue was that the County Election Commissioner in Douglas County did not have the county's voting precincts named as of the end of November. The precincts had number designations. The notice stated the County Election Commissioner would be naming the precincts and therefore when the county did so an amendment to the Petition was filed with the proper names. This did not change the territory or population in the voting subdivisions. On December 14, 2011, OPPD filed a second amendment petition due to additional updated designation for certain precincts in Douglas County. The new changes did not alter the boundaries or population of the precincts involved. No protests or objections were filed concerning the Petition. On January 13, 2012, the Board voted to approve Omaha Public Power District's Petition for Charter Amendment 6, as amended.

**McCook Public Power District
Charter Amendment 7**

On November 29, 2011, the McCook Public Power District filed a Petition to amend its charter. The amendment would update sections 2 and 6 of the District's charter in order to redistribute the population amongst the District's voting subdivisions based on the 2010 Census figures. As required by state law, the Board published notice of the proposed changes in at least two newspapers with general circulation in the District's territory for three consecutive weeks. The notice was published in the *McCook Daily Gazette* and the *Frontier County Enterprise* on December 8, 15 and 22, 2011. No protests or objections were filed concerning the Petition. No protests or objections were filed concerning the Petition. On January 13, 2012, the Board voted to approve McCook Public Power District's Petition for Charter Amendment 7.

**Northeast Nebraska Public Power District
Charter Amendment 9**

On January 30, 2012, the Northeast Nebraska Public Power District filed a Petition to amend its charter. The proposed amendment would amend sections 4, 6, 7, 8 and 13 of the District's charter in order to redistribute the population amongst the District's voting subdivisions based on the 2010 Census figures. An amended petition was filed on February 13, 2012. The amended petition addressed some issues that were identified in the original Petition. The Board published notice in at least two local newspapers with general circulation in the District's territory for three consecutive weeks. Due to the size and configuration of the District's territory, the District requested to publish notice in three newspapers. Notice was published in the *Pierce County Leader*, the *Nebraska Journal-Leader*, and the *Wayne Herald*. The dates for the publication of notice were February 23, March 1 and March 8 in all three newspapers. No protests or objections were filed concerning the Petition. On April 13, 2012, the Board voted to approve Northeast Nebraska PPD's Petition for Charter Amendment 9.

**Butler Public Power District
Charter Amendment 9**

On February 27, 2012, the Butler Public Power District filed a Petition for Charter Amendment 9. The proposed amendment would amend section 6 of the District's charter in order to redistribute the population amongst the District's voting subdivisions based on the 2010 Census figures. The Board published notice in at least two local newspapers with general circulation in the District's

territory for three consecutive weeks. Notice was published in the *Banner Press*, which is published in David City, and the *Wahoo Newspaper*. The dates for the publication of notice were March 8, 15 and 22 in both newspapers. No protests or objections were filed. On May 11, 2012, the Board voted to approve Butler Public Power District's Petition for Charter Amendment 9.

Polk County Public Power District Charter Amendment 8

On April 12, 2012, the Polk County Public Power District filed a Petition for Charter Amendment 8. The proposed amendment would amend sections 2 and 6 of the District's charter in order to redistribute the population amongst the District's voting subdivisions based on the 2010 Census figures. The Board published notice in at least two local newspapers with general circulation in the District's territory for three consecutive weeks. Notice was published in the *Polk County News*, which is published in Stromsburg, and the *Central City Republican-Nonpareil*. The dates for the publication of notice were April 26, May 3 and May 10 in both newspapers. No protests or objections were filed. On June 8, 2012, the Board voted to approve Polk County Public Power District's Petition for Charter Amendment 8.

Twin Valleys Public Power District Charter Amendment 7

On April 19, 2012, the Twin Valleys Public Power District filed a Petition for Charter Amendment 7. The proposed amendment would amend sections II and VI of the District's charter in order to redistribute the population amongst the District's voting subdivisions based on the 2010 Census figures. The Board published notice in at least two local newspapers with general circulation in the District's territory for three consecutive weeks. Notice was published in the *Harlan County Journal*, which is published in Alma, and the *Cambridge Clarion*. The dates for the publication of notice were May 3, 10 and 17 in both newspapers. No protests or objections were filed. On June 8, 2012, the Board voted to approve Twin Valleys Public Power District's Petition for Charter Amendment 7.

COMPLAINTS

C-45
Complaint by Northeast Nebraska Public Power District
against
City of Pierce

On December 15, 2010, a formal complaint was filed by the Northeast Nebraska Public Power District. Northeast NE PPD alleged in C-45 that the City of Pierce has been providing service to the Village of Foster, has upgraded lines, constructed new lines, and provided new electrical service to a number of customers, all without the consent of Northeast NE PPD and the approval of Power Review Board. A notice of filing and hearing date was sent to the City of Pierce stating that the City had 20 days from December 15, 2010 in which to file a Reply. The City filed a Reply on January 5, 2011. On January 13, 2011, Northeast NE PPD filed a Motion for Continuance asking that the hearing be continued until March 18, 2011, so that the two parties would have time to conduct discovery and possibly negotiate a settlement. The request for a continuance was granted and an Order for Continuance was sent to the parties on Friday, January 14, 2011. A hearing on the merits was held on April 22, 2011. The majority of the complaint dealt with customers located within one-half mile of a distribution line owned by Pierce that extends west of town and ultimately serves customers in the Village of Foster. Northeast NE PPD alleged that it never consented for Pierce to serve most of the customers. Northeast NE PPD withdrew the portion of its complaint concerning the Village of Foster during the hearing. The Board issued its Order on June 24, 2011, finding that the service to those customers within one-half mile of the City's distribution lines located inside the Northeast NE PPD's service area to which the City provided electric service prior to the effective date of a 1979 amendment to Neb. Rev. Stat. section 70-1008 were established legally, and the City had the right to continue serving those customers. The Board also ruled that customers or loads to which the City established retail electric service in 1980 or afterwards (subsequent to the effective date of the 1979 amendment to Neb. Rev. Stat. section 70-1008) constitute a violation of retail service area agreement 267 and the provisions of Neb. Rev. Stat. section 70-1011. If the date of initial service could not be determined for a customer or load, the Board found it will presume the City established the service prior to 1980. On July 22, 2011, the City of Pierce filed an appeal with the Nebraska Court of Appeals. The Nebraska Supreme Court removed the case to its docket. Oral arguments were scheduled for May 2, 2012. On April 10, 2012, the two parties filed a settlement agreement and a joint application to amend retail Service Area Agreement 267, designated as SAA 267-12-A, with the Board. It was requested that the Board approve the settlement agreement prior to oral arguments and prior to dismissal of the appeal. Since the oral arguments in this appeal are scheduled to be heard on May 2, and the Board's next meeting is not scheduled until after May 2, it was necessary to take this matter up prior to the Supreme Court oral arguments in this matter. The settlement agreement and SAA 267-12-A were taken up as two separate agenda items. The description of SAA 267-12-A may be found in this report under the section on service area agreements amendments. During the Board's public meeting on April 13, 2012, the Board voted to accept the settlement agreement in C-45. On May 17, 2012, the Supreme Court dismissed the appeal of C-45 with prejudice.

C-46
Complaint by Ms. Bobbie Rousseau
against
Public Power Generation Agency of Hastings, Nebraska

On August 10, 2011, a formal complaint was filed by Ms. Bobbie Rousseau of Hastings, Nebraska against the Public Power Generation Agency (“PPGA”). The complaint was designated C-46. The complaint alleges that there was damage to a metal fence and that the PPGA refused to fix a utility pole resulting in the electric service being disconnected to Ms. Rousseau’s residence. There were numerous documents attached to the complaint, some of which showed schematics of the electrical infrastructure. In addition, there was a letter from the City of Hastings’ Electrical Inspector informing Ms. Rousseau that a utility service pole or mast serving her house was leaning badly and appeared ready to fall down. The letter stated that fixing the pole was her responsibility and not Hastings Utilities’. The letter also stated that this matter needed to be addressed by June 9, 2011 or the inspector would order the electric service disconnected. The Board sent a Notice of Complaint to the PPGA on August 11. PPGA filed a Reply within twenty days on August 29. A letter was sent to Ms. Rousseau and PPGA informing them that the matter would be placed on the Board’s agenda for the September 9 meeting to address the matter of jurisdiction over the complaint. The letter also explained that the Board would be acting in its quasi-judicial capacity, so no additional testimony or evidence would be permitted during the meeting. After reviewing the available evidence during its September 9 public meeting, the Board determined that the complaint pertained to infrastructure, and the safety and maintenance of that infrastructure. The PRB’s statute concerning complaints does not provide jurisdiction over issues related to these subjects. It was also stated that PPGA is not a retail electric distribution utility, so it is not clear why the PPGA would be responsible for repairs or maintenance to a distribution utility pole. At the Board’s public meeting on September 9, 2011, the Board dismissed the complaint on the basis that it lacks jurisdiction over the issue of maintenance and repair to electric infrastructure and/or personal property.

**ROSTER OF POWER SUPPLIERS
OPERATING IN
THE STATE OF NEBRASKA**

Wholesale Power Suppliers	Gross Income Calendar Year 2010	Assessment Fiscal Year 2011-2012	Gross Income Calendar Year 2011	Assessment Fiscal Year 2012-2013
Central Nebraska Public Power & Irrigation District	\$ 18,783,286.00	\$ 1,713.41	\$ 19,339,039.00	\$ 2,991.79
*Loup River Public Power District	\$ 89,047,272.00	\$ 8,122.89	\$ 93,267,750.00	\$ 14,428.71
Municipal Energy Agency of Nebraska	\$ 42,515,534.00	\$ 3,878.27	\$ 45,471,526.00	\$ 7,034.54
*Nebraska Public Power District	\$ 924,094,000.00	\$ 84,295.85	\$ 997,718,000.00	\$ 154,349.04
*Omaha Public Power District	\$ 989,070,248.00	\$ 90,222.99	\$ 1,044,657,766.00	\$ 161,610.72
Tri-State G and T Association, Inc.	\$ 64,733,656.26	\$ 5,905.00	\$ 65,059,408.10	\$ 10,064.83
*Indicates Wholesale and Retail Power Suppliers				
<u>Public Power Districts and Cooperatives</u>				
Burt County Public Power District	\$ 10,024,478.00	\$ 914.43	\$ 10,009,829.00	\$ 1,548.54
Butler Public Power District	\$ 11,484,681.00	\$ 1,047.63	\$ 14,668,161.00	\$ 2,269.19
Cedar-Knox Public Power District	\$ 13,614,269.00	\$ 1,241.89	\$ 17,212,920.00	\$ 2,662.87
Cherry-Todd Electric Cooperative, Inc.	\$ 681,801.96	\$ 62.19	\$ 2,109,954.23 **	\$ 326.41
Chimney Rock Public Power District	\$ 6,056,816.00	\$ 552.50	\$ 6,105,818.00	\$ 944.58
Cornhusker Public Power District	\$ 27,530,574.00	\$ 2,511.34	\$ 28,735,503.23	\$ 4,445.44
Cuming County Public Power District	\$ 8,002,436.00	\$ 729.98	\$ 8,366,826.00	\$ 1,294.37
Custer Public Power District	\$ 18,577,484.00	\$ 1,694.64	\$ 21,419,253.00	\$ 3,313.60
Dawson Public Power District	\$ 44,417,551.00	\$ 4,051.77	\$ 48,855,700.00	\$ 7,558.08

**Error in 2010 computation corrected in 2011

Public Power Districts and Cooperatives	Gross Income Calendar Year 2010	Assessment Fiscal Year 2011-2012	Gross Income Calendar Year 2011	Assessment Fiscal Year 2012-2013
Elkhorn Rural Public Power District	\$ 20,150,106.00	\$ 1,838.09	\$ 22,181,686.00	\$ 3,431.55
High West Energy, Inc.	\$ 8,922,740.00	\$ 813.93	\$ 9,834,100.00	\$ 1,521.36
Highline Electric Association	\$ 8,517,804.61	\$ 776.99	\$ 7,750,100.64	\$ 1,198.96
Howard Greeley Rural Public Power District	\$ 9,801,408.00	\$ 894.08	\$ 10,116,040.00	\$ 1,564.97
Imperial Public Power District	\$ 1,875,156.56	\$ 171.05	\$ 1,412,879.00	\$ 218.58
K.B.R. Rural Public Power District	\$ 9,383,573.00	\$ 855.97	\$ 9,592,794.00	\$ 1,484.03
LaCreek Electric Association, Inc.	\$ 476,631.88	\$ 43.48	\$ 436,250.49	\$ 67.49
Loup Valley Rural Public Power District	\$ 9,813,591.00	\$ 895.20	\$ 10,910,674.00	\$ 1,687.90
McCook Public Power District	\$ 15,085,784.00	\$ 1,376.13	\$ 14,911,437.00	\$ 2,306.83
Midwest Electric Cooperative, Inc.	\$ 22,650,162.00	\$ 2,066.15	\$ 22,920,510.00	\$ 3,545.85
Niobrara Electric Association, Inc.	\$ 1,100,494.00	\$ 100.39	\$ 1,211,269.00	\$ 187.39
Niobrara Valley Electric Membership Corporation	\$ 10,419,304.00	\$ 950.45	\$ 11,381,241.00	\$ 1,760.70
Norris Public Power District	\$ 51,818,617.00	\$ 4,726.89	\$ 60,290,034.00	\$ 9,326.99
North Central Public Power District	\$ 9,902,955.99	\$ 903.35	\$ 11,218,925.81	\$ 1,735.59
Northeast Nebraska Public Power District	\$ 19,132,788.00	\$ 1,745.29	\$ 20,229,682.00	\$ 3,129.57
Northwest Rural Public Power District	\$ 9,867,368.00	\$ 900.10	\$ 10,248,782.00	\$ 1,585.51
Panhandle Rural Electric Membership Association	\$ 11,364,431.00	\$ 1,036.66	\$ 11,539,449.00	\$ 1,785.18

Public Power Districts and Cooperatives	Gross Income Calendar Year 2010	Assessment Fiscal Year 2011-2012	Gross Income Calendar Year 2011	Assessment Fiscal Year 2012-2013
Perennial Public Power District	\$ 23,084,219.00	\$ 2,105.74	\$ 23,670,347.00	\$ 3,661.85
Polk County Rural Public Power District	\$ 10,395,071.00	\$ 948.24	\$ 10,536,392.00	\$ 1,630.00
Rolling Hills Electric Cooperative, Inc.	\$ 12,674.62	\$ 1.16	\$ 12,842.54	\$ 1.99
Roosevelt Public Power District	\$ 5,947,294.00	\$ 542.51	\$ 5,996,132.00	\$ 927.61
Seward County Public Power District	\$ 8,414,465.00	\$ 767.57	\$ 8,786,681.00	\$ 1,359.32
South Central Public Power District	\$ 14,584,994.00	\$ 1,330.44	\$ 14,852,869.00	\$ 2,297.77
Southern Public Power District	\$ 76,009,125.00	\$ 6,933.55	\$ 75,474,091.00	\$ 11,676.00
Southwest Public Power District	\$ 15,739,818.00	\$ 1,435.79	\$ 16,679,272.00	\$ 2,580.32
Stanton County Public Power District	\$ 5,972,509.00	\$ 544.81	\$ 9,249,862.00	\$ 1,430.97
Twin Valleys Public Power District	\$ 11,209,077.00	\$ 1,022.49	\$ 12,924,021.00	\$ 1,999.37
Wheatbelt Public Power District	\$ 17,604,418.00	\$ 1,605.88	\$ 17,568,049.00	\$ 2,717.81
Wyrulec Company	\$ 2,544,739.00	\$ 232.13	\$ 2,575,761.00	\$ 398.48
Y-W Electric Association, Inc.	\$ 737,815.36	\$ 67.30	\$ 736,903.57	\$ 114.00

Municipal Power Suppliers - Generation & Distribution	Gross Income Calendar Year 2010	Assessment Fiscal Year 2011-2012	Gross Income Calendar Year 2011	Assessment Fiscal Year 2012-2013
Alliance, City of	\$ 7,682,965.41	\$ 700.84	\$ 8,624,163.38	\$ 1,334.18
Ansley, Village of	\$ 424,799.78	\$ 38.75	\$ 441,726.18	\$ 68.34
Arnold, Village of	\$ 683,940.60	\$ 62.39	\$ 754,767.40	\$ 116.76
Auburn, City of	\$ 5,332,123.63	\$ 486.40	\$ 5,673,299.00	\$ 877.67
Beaver City, City of	\$ 445,082.00	\$ 40.60	\$ 644,309.48	\$ 99.68
Benkelman, City of	\$ 1,010,105.72	\$ 92.14	\$ 1,110,853.49	\$ 171.85
Blue Hill, City of	\$ 724,340.45	\$ 66.07	\$ 717,450.50	\$ 110.99
Broken Bow, City of	\$ 5,326,854.86	\$ 485.92	\$ 5,839,620.49	\$ 903.40
Burwell, City of	\$ 1,180,593.56	\$ 107.69	\$ 1,198,965.88	\$ 185.48
Callaway, Village of	\$ 617,083.14	\$ 56.29	\$ 624,448.71	\$ 96.60
Cambridge, City of	\$ 2,797,891.15	\$ 255.22	\$ 3,111,132.59	\$ 481.30
Campbell, Village of	\$ 283,551.34	\$ 25.87	\$ 278,671.22	\$ 43.11
Chappell, City of	\$ 744,373.00	\$ 67.90	\$ 802,664.00	\$ 124.17
Crete, City of	\$ 7,759,722.00	\$ 707.84	\$ 8,218,394.28	\$ 1,271.40
Curtis, City of	\$ 1,373,875.00	\$ 125.32	\$ 1,300,000.00	\$ 201.11
David City, City of	\$ 3,892,589.97	\$ 355.08	\$ 3,726,467.77	\$ 576.49
Deshler, City of	\$ 868,302.70	\$ 79.21	\$ 856,761.02	\$ 132.54
Emerson, City of	\$ 606,432.99	\$ 55.32	\$ 602,306.69	\$ 93.18
Fairbury, City of	\$ 6,774,884.00	\$ 618.00	\$ 6,727,062.00	\$ 1,040.69
Falls City, City of	\$ 3,856,465.60	\$ 351.79	\$ 3,794,685.60	\$ 587.05
Franklin, City of	\$ 1,104,564.46	\$ 100.76	\$ 1,164,211.72	\$ 180.11
Fremont, City of	\$ 27,640,626.00	\$ 2,521.38	\$ 29,583,159.00	\$ 4,576.58
Grand Island, City of	\$ 55,338,045.00	\$ 5,047.94	\$ 58,717,073.00	\$ 9,083.65
Hastings, City of	\$ 31,638,198.00	\$ 2,886.04	\$ 32,196,724.00	\$ 4,980.90
Holdrege, City of	\$ 8,076,935.00	\$ 736.78	\$ 8,797,767.00	\$ 1,361.03

Municipal Power Suppliers - Generation & Distribution	Gross Income Calendar Year 2010	Assessment Fiscal Year 2011-2012	Gross Income Calendar Year 2011	Assessment Fiscal Year 2012-2013
Imperial, City of	\$ 2,409,874.00	\$ 219.83	\$ 2,299,281.00	\$ 355.70
Kimball, City of	\$ 2,374,517.57	\$ 216.60	\$ 2,551,477.00	\$ 394.72
Laurel, City of	\$ 876,722.98	\$ 79.97	\$ 922,016.11	\$ 142.64
Lincoln, City of	\$ 261,377,608.00	\$ 23,842.87	\$ 267,035,731.00	\$ 41,310.98
Lodgepole, Village of	\$ 293,139.39	\$ 26.74	\$ 305,116.91	\$ 47.20
Lyons, City of	\$ 764,826.00	\$ 69.77	\$ 876,249.03	\$ 135.56
Madison, City of	\$ 3,632,144.21	\$ 331.32	\$ 3,849,176.10	\$ 595.48
Minden, City of	\$ 2,871,783.69	\$ 261.96	\$ 3,107,792.00	\$ 480.78
Mullen, City of	\$ 493,742.29	\$ 45.04	\$ 546,038.27	\$ 84.47
Nebraska City, City of	\$ 13,910,050.41	\$ 1,268.87	\$ 14,959,237.70	\$ 2,314.23
Neligh, City of	\$ 1,886,097.20	\$ 172.05	\$ 2,000,976.49	\$ 309.56
Ord, City of	\$ 2,852,506.02	\$ 260.21	\$ 3,258,025.82	\$ 504.02
Oxford, Village of	\$ 872,920.43	\$ 79.63	\$ 766,558.99	\$ 118.59
Pender, Village of	\$ 1,099,469.00	\$ 100.29	\$ 1,159,075.62	\$ 179.31
Plainview, City of	\$ 1,173,616.57	\$ 107.06	\$ 1,168,221.64	\$ 180.73
Randolph, City of	\$ 723,578.37	\$ 66.00	\$ 790,634.00	\$ 122.31
Red Cloud, City of	\$ 966,411.00	\$ 88.16	\$ 1,031,213.00	\$ 159.53
Sargent, City of	\$ 630,130.52	\$ 57.48	\$ 626,564.74	\$ 96.93
Schuyler, City of	\$ 9,042,647.00	\$ 824.87	\$ 9,634,706.37	\$ 1,490.51
Sidney, City of	\$ 6,543,390.00	\$ 596.89	\$ 6,904,345.00	\$ 1,068.12
Spalding, Village of	\$ 651,884.88	\$ 59.46	\$ 643,465.45	\$ 99.55
Stratton, Village of	\$ 391,679.90	\$ 35.73	\$ 383,272.67	\$ 59.29
Stuart, Village of	\$ 636,425.00	\$ 58.05	\$ 679,252.00	\$ 105.08
Tecumseh, City of	\$ 2,477,101.59	\$ 225.96	\$ 2,595,502.64	\$ 401.53
Trenton, Village of	\$ 605,965.73	\$ 55.28	\$ 655,973.94	\$ 101.48

Municipal Power Suppliers - Generation & Distribution	Gross Income Calendar Year 2010	Assessment Fiscal Year 2011-2012	Gross Income Calendar Year 2011	Assessment Fiscal Year 2012-2013
Wahoo, City of	\$ 4,595,059.67	\$ 419.16	\$ 5,153,211.64	\$ 797.21
Wakefield, City of	\$ 3,092,251.67	\$ 282.08	\$ 3,261,555.61	\$ 504.57
Wauneta, Village of	\$ 710,564.00	\$ 64.82	\$ 837,989.00	\$ 129.64
Wayne, City of	\$ 5,175,467.80	\$ 472.11	\$ 5,367,449.64	\$ 830.36
West Point, City of	\$ 3,704,728.82	\$ 337.95	\$ 3,829,701.25	\$ 592.46
Wilber, City of	\$ 1,469,141.13	\$ 134.02	\$ 1,506,220.35	\$ 233.02
<u>Municipal Power Supplier – Distribution Only</u>				
Arapahoe, City of	\$ 1,284,885.17	\$ 117.21	\$ 1,453,022.19	\$ 224.79
Bartley, Village of	\$ 345,011.28	\$ 31.47	\$ 236,633.45	\$ 36.61
Battle Creek, City of	\$ 1,020,221.71	\$ 93.06	\$ 1,006,111.12	\$ 155.65
Bayard, City of	\$ 1,248,199.48	\$ 113.86	\$ 1,135,626.44	\$ 175.68
Beatrice, City of	\$ 13,682,894.03	\$ 1,248.15	\$ 14,425,552.94	\$ 2,231.66
Bradshaw, Village of	\$ 275,840.97	\$ 25.16	\$ 275,361.07	\$ 42.60
Brainard, Village of	\$ 373,132.20	\$ 34.04	\$ 432,235.38	\$ 66.87
Bridgeport, City of	\$ 1,235,091.70	\$ 112.67	\$ 1,383,949.76	\$ 214.10
Central City, City of	\$ 3,061,749.23	\$ 279.29	\$ 3,312,145.79	\$ 512.40
Chester, Village of	\$ 296,821.66	\$ 27.08	\$ 283,573.00	\$ 43.87
Cozad, City of	\$ 4,902,226.00	\$ 447.18	\$ 5,092,888.00	\$ 787.88
Dakota City, City of	\$ 123,030.01	\$ 11.22	\$ 160,487.38	\$ 24.83
Davenport, Village of	\$ 307,633.60	\$ 28.06	\$ 327,771.67	\$ 50.71
Decatur, Village of	\$ 470,307.38	\$ 42.90	\$ 467,425.10	\$ 72.31
DeWitt, Village of	\$ 525,127.00	\$ 47.90	\$ 458,333.00	\$ 70.91
Dorchester, Village of	\$ 610,285.46	\$ 55.67	\$ 641,389.35	\$ 99.22

Municipal Power Suppliers - Distribution Only	Gross Income Calendar Year 2010	Assessment Fiscal Year 2011-2012	Gross Income Calendar Year 2011	Assessment Fiscal Year 2012-2013
Edgar, City of	\$ 568,078.17	\$ 51.82	\$ 563,530.74	\$ 87.18
Elk Creek, Village of	\$ 91,372.73	\$ 8.34	\$ 89,371.76	\$ 13.83
Endicott, Village of	\$ 76,803.78	\$ 7.01	\$ 73,027.00	\$ 11.30
Fairmont, Village of	\$ 448,077.05	\$ 40.87	\$ 500,105.92	\$ 77.37
Friend, City of	\$ 1,078,420.77	\$ 98.37	\$ 982,286.59	\$ 151.96
Gering, City of	\$ 7,032,086.51	\$ 641.47	\$ 7,419,630.17	\$ 1,147.83
Gilead, Village of	\$ 32,225.84	\$ 2.94	\$ 32,317.31	\$ 5.00
Giltner, Village of	\$ 277,174.27	\$ 25.28	\$ 295,018.48	\$ 45.64
Gothenburg, City of	\$ 4,076,875.51	\$ 371.89	\$ 4,283,155.57	\$ 662.61
Grant, City of	\$ 1,329,087.61	\$ 121.24	\$ 1,385,362.58	\$ 214.32
Greenwood, Village of	\$ 394,312.00	\$ 35.97	\$ 403,723.31	\$ 62.46
Hampton, Village of	\$ 358,705.09	\$ 32.72	\$ 427,058.53	\$ 66.07
Hebron, City of	\$ 1,715,907.81	\$ 156.53	\$ 1,829,408.30	\$ 283.01
Hemingford, Village of	\$ 827,888.95	\$ 75.52	\$ 951,436.53	\$ 147.19
Hickman, City of	\$ 980,990.08	\$ 89.49	\$ 1,010,195.81	\$ 156.28
Hildreth, Village of	\$ 301,226.49	\$ 27.48	\$ 348,754.78	\$ 53.95
Holbrook, Village of	\$ 267,657.62	\$ 24.42	\$ 269,613.00	\$ 41.71
Hubbell, Village of	\$ 87,523.67	\$ 7.98	\$ 91,612.83	\$ 14.17
Indianola, City of	\$ 487,124.31	\$ 44.44	\$ 506,135.05	\$ 78.30
Leigh, Village of	\$ 532,505.70	\$ 48.58	\$ 552,738.71	\$ 85.51
Lexington, City of	\$ 13,836,908.06	\$ 1,262.20	\$ 14,958,683.86	\$ 2,314.14
Lyman, Village of	\$ 685,052.98	\$ 62.49	\$ 683,048.00	\$ 105.67
Mitchell, City of	\$ 1,271,657.62	\$ 116.00	\$ 1,338,632.29	\$ 207.09
Morrill, Village of	\$ 2,067,261.15	\$ 188.58	\$ 1,783,566.00	\$ 275.92
Nelson, City of	\$ 502,534.06	\$ 45.84	\$ 532,032.23	\$ 82.31

Municipal Power Suppliers - Distribution Only	Gross Income Calendar Year 2010	Assessment Fiscal Year 2011-2012	Gross Income Calendar Year 2011	Assessment Fiscal Year 2012-2013
North Platte, City of	\$ 22,952,454.00	\$ 2,093.72	\$ 24,099,408.00	\$ 3,728.23
Pierce, City of	\$ 1,699,482.95	\$ 155.03	\$ 1,702,997.95	\$ 263.46
Polk , Village of	\$ 351,626.25	\$ 32.08	\$ 353,562.59	\$ 54.70
Prague, Village of	\$ 254,949.47	\$ 23.26	\$ 282,695.07	\$ 43.73
Reynolds, Village of	\$ 93,486.04	\$ 8.53	\$ 64,009.00	\$ 9.90
St. Paul, City of	\$ 2,169,000.00	\$ 197.86	\$ 2,279,000.00	\$ 352.57
Scribner, City of	\$ 1,057,289.38	\$ 96.45	\$ 1,051,825.48	\$ 162.72
Seward, City of	\$ 7,403,322.93	\$ 675.33	\$ 7,913,754.00	\$ 1,224.27
Shickley, Village of	\$ 312,166.64	\$ 28.48	\$ 301,393.31	\$ 46.63
Snyder, Village of	\$ 608,402.00	\$ 55.50	\$ 631,687.87	\$ 97.72
South Sioux City, City of	\$ 16,541,380.00	\$ 1,508.90	\$ 17,702,209.00	\$ 2,738.57
Spencer, Village of	\$ 453,234.00	\$ 41.34	\$ 494,910.00	\$ 76.56
Stromsburg, City of	\$ 868,153.45	\$ 79.19	\$ 936,940.56	\$ 144.95
Superior, City of	\$ 2,311,816.78	\$ 210.88	\$ 2,391,955.04	\$ 370.04
Sutton, City of	\$ 1,498,218.14	\$ 136.67	\$ 1,595,498.78	\$ 246.83
Syracuse, City of	\$ 1,930,558.67	\$ 176.11	\$ 1,992,737.34	\$ 308.28
Talmage, Village of	\$ 185,334.00	\$ 16.91	\$ 176,766.32	\$ 27.35
Valentine, City of	\$ 3,445,839.85	\$ 314.33	\$ 3,734,492.49	\$ 577.73
Walthill, Village of	\$ 456,888.46	\$ 41.68	\$ 449,509.82	\$ 69.54
Weston, Village of	\$ 237,316.24	\$ 21.65	\$ 239,819.28	\$ 37.10
Wilcox, Village of	\$ 407,567.68	\$ 37.18	\$ 456,567.64	\$ 70.63
Winside, Village of	\$ 303,192.09	\$ 27.66	\$ 272,223.51	\$ 42.11
Wisner, City of	\$ 1,282,499.29	\$ 116.99	\$ 1,354,133.57	\$ 209.49
Wood River, City of	\$ 1,070,086.06	\$ 97.61	\$ 1,107,900.80	\$ 171.39
Wymore, City of	\$ 1,062,366.09	\$ 96.91	\$ 1,219,689.82	\$ 188.69

POWER SUPPLIERS BY CATEGORY

Supplier	Fiscal Year <u>2009-2010</u>	Gross Income	Fiscal Year <u>2010-2011</u>	Gross Income
	Number of Suppliers		Number of Suppliers	
Wholesale	5	\$1,737,113,045.00	5	\$ 1,891,123,402.00
Generation and Transmission Associations	2	\$ 65,980,047.48	2	\$ 61,880,238.74
Public Power Districts and Cooperatives	39	\$ 476,826,522.25	39	\$ 521,991,913.03
Municipal-Generation and Distribution	56	\$ 479,691,170.36	55	\$ 476,509,676.67
Municipal-Distribution Only	67	\$ 121,455,296.07	66	\$ 127,109,250.26
INDUSTRY TOTAL	169	\$2,881,066,081.16	167	\$ 3,078,614,480.70

Supplier	Fiscal Year <u>2011-2012</u>	Gross Income	Fiscal Year <u>2012-2013</u>	Gross Income
	Number of Suppliers		Number of Suppliers	
Wholesale	5	\$2,063,510,340.00	5	\$ 2,200,454,081.00
Generation and Transmission Associations	2	\$ 64,733,656.26	2	\$ 65,059,408.10
Public Power Districts and Cooperatives	39	\$ 552,929,224.98	39	\$ 592,733,041.51
Municipal-Generation and Distribution	55	\$ 514,489,790.20	55	\$ 534,212,715.38
Municipal-Distribution Only	66	\$ 138,046,545.17	66	\$ 145,208,638.23
INDUSTRY TOTAL	167	\$3,333,709,556.61	167	\$ 3,537,667,884.22

LOAD AND CAPABILITY REPORT
PREPARED BY
NEBRASKA POWER ASSOCIATION



July 20, 2011

Mr. Tim Texel
Executive Director and General Counsel
Nebraska Power Review Board
301 Centennial Mall South
State Office Building 5th floor
PO Box 94713
Lincoln, NE 68509-4713

SUBJECT: Nebraska Power Association Load and Capability Report

Dear Tim:

As required by State Statute (70-1025), attached is the Nebraska Power Association (NPA) annual load and capability report. Per the statute, the report includes the sum of Nebraska's utilities peak demand forecasts and resources over a 20-year period (2011 through 2030).

The current combined statewide forecast of non-coincident peak demand is derived by summing the demand forecasts for each individual utility. Each utility supplied a peak demand forecast net of demand-side management programs based on the loads having a 50/50 probability of being higher or lower. Over the twenty-year period of 2011 through 2030, the average annual compounded peak demand growth rate for the State is projected at 1.30% per year (individual utility ranges from 0.4%/yr to 1.8%/yr). This is lower than last year's 1.38% for the period 2010 through 2029.

In addition to the load requirements of our customers, the state utilities must also maintain a 12.0% capacity margin (equivalent to a 13.64% reserve margin) above their peak demand forecast ("Minimum Obligation"). This is the installed reserve requirement of the Southwest Power Pool (SPP) Reserve Sharing Pool. All SPP Reserve Sharing members must maintain this in order to assist each other in the case of emergencies such as unit outages. By having a reserve sharing pool, instead of individual utilities carrying their own reserves to protect them from the loss of their largest unit on their system, the reserve requirement for all members of the pool is reduced. A 12% capacity margin is adequate in a pool, but individually it would be much higher. This reserve capacity amounts to significant resource capability over and above the Nebraska load requirement, 757 MW in 2011 and 1,004 MW by 2030.

Mr. Tim Texel
July 20, 2011
Page 2

The State has an "Existing" in-service creditable generating resource capability of 8,009 MW. The 220 MW coal-fired Whelan Energy Center began commercial operation on May 1, 2011. Eighty MW is sold to out-of-state participants and not available to serve Nebraska load.

There are 239 MW of "Committed" resources (have Nebraska Power Review Board (NPRB) approval if required -- PURPA qualifying projects do not need NPRB approval). Committed resources include the 75 MW power uprate at Ft. Calhoun Station in 2013 and 164 MW nameplate (not accredited capacity) of wind power by December 31, 2012. The wind power additions include 3 MW at Springview, 80 MW at Broken Bow, 40.5 MW at Petersburg, and 40 MW at Crofton Hills.

Exhibit 1 is the load and capability chart based on existing and committed resources and Exhibit 2 is the corresponding load and capability table. The "Minimum Obligation" line is the statewide obligation based on the 50/50 forecast (normal weather) and the minimum 12% capacity margin of the SPP Reserve Sharing Pool. Based on the existing and committed resources, the statewide deficit occurs in 2026 for the Minimum Obligation. Late last year, NPPD received approval from the NRC to extend the Cooper Nuclear Station operating license to 2034. The statewide deficit for the Minimum Obligation has advanced 1 year (from 2027 to 2026) as compared to last year.

There are 97 MW of "Planned" resources (units that utilities have authorized expenditures for an architect/engineer, or permitting, but do not have NPRB approval). Planned resources include 22 MW from changes in operation at LES peaking units and a 75 MW wind farm expansion at Broken Bow.

Resources identified as "Studied" for this report were not based on the traditional method but in a way specifically for the statewide plan. For years beyond the point when existing, committed, and planned resources would meet a utility's Minimum Obligation, each utility would establish Studied resources in a quantity to meet this deficit gap. These Studied resources are identified based on renewable, baseload, intermediate, and peaking resources considering current and future needs. The result is a listing of the preferable mix of renewable, baseload, intermediate and peaking resources for each year. The summation of Studied resources will provide the basis for the NPRB and the state utilities to understand the forecasted future need by year and by resource type. This can be used as a joint planning document and a tool for a coordinated long range power supply planning.

There are 1,501 MW of "Studied" resources that include 617 MW of nameplate renewable (wind) resources, 320 MW of baseload capacity, 208 MW of intermediate capacity, and 356 MW of peaking capacity by 2030.

Mr. Tim Texel
July 20, 2011
Page 3

Exhibit 3 shows the statewide load and capability chart considering 8,009 MW of Existing, 239 MW of Committed, 97 MW of Planned, and 1,501 MW of Studied resources. Exhibit 4 is the corresponding load and capability table. As intended, these exhibits show how the Minimum Obligation can be met with the addition of the Studied resources.

The Committed, Planned, and Studied accredited capability resources are summarized in Exhibit 5. Exhibit 6 summarizes the Existing, Committed, Planned, and Studied renewable resources.

The State is projected to have 1,002 MW nameplate of renewable resources in the year 2030. Most of this capacity is wind. Because of intermittent nature of wind energy, less than 5% of the nameplate capacity is accreditable under SPP rules. For many utilities, the summer accreditable capacity is zero.

Nebraska's Existing generator capability resources are listed by unit in Exhibit 7. Nebraska has 8,009 MW of existing resources. 738 MW or 9% of that total are greater than 50 years old. Another 618 MW or 8% are 41 to 50 years old. Most of these units have no planned retirement date. Based on the age of Nebraska's Existing units, the NPRB requested a sensitivity to the Load and Capability Report that would take into account proposed rules from the U.S. Environmental Protection Agency (EPA) that may impact the deficit load year.

There are recently promulgated and proposed rules from the EPA that could affect Nebraska generation resources. These rules include the Cross-State Air Pollution Rule, released by EPA the week of July 10, 2011, and the so-called "Boiler MACT" rule, anticipated to be released by EPA later this year. The impact of the EPA rules could affect decisions as to whether to retrofit additional pollution control equipment on some existing generating units.

The SPP is studying these issues as part of its Integrated Transmission Planning 10-Year Plan (ITP10) that is under development by the SPP Staff and stakeholders and is scheduled to be presented to the SPP Board of Directors in January 2012 for approval. As part of this process, SPP has developed a future scenario in which the assumption for planning purposes is that coal-fired units less than 200 MW are retired in the next few years.

The SPP scenario was incorporated as a sensitivity case for this year's Load and Capability Report as shown in Exhibit 8. This exhibit shows a statewide deficit in the year 2017 if all Nebraska coal units less than 200 MW were retired in the year 2016.

David Ried will be at the NPRB meeting on August 12, 2011 to present this information and to address questions. We also anticipate that many Joint Planning Subcommittee members will be present to address any utility-specific questions. If prior to that meeting you have any questions regarding this load and capability submittal, please feel free to call David Ried of Omaha Public Power District (402-514-1025), who accumulated the report.

Mr. Tim Texel
July 20, 2011
Page 4

Sincerely,

Clint Johannes

Clint Johannes, Chairman
Joint Planning Subcommittee of NPA

c: NPA Joint Planning Subcommittee
NPA Board

EXHIBIT 1 Statewide Capability vs. Obligation Committed Resources

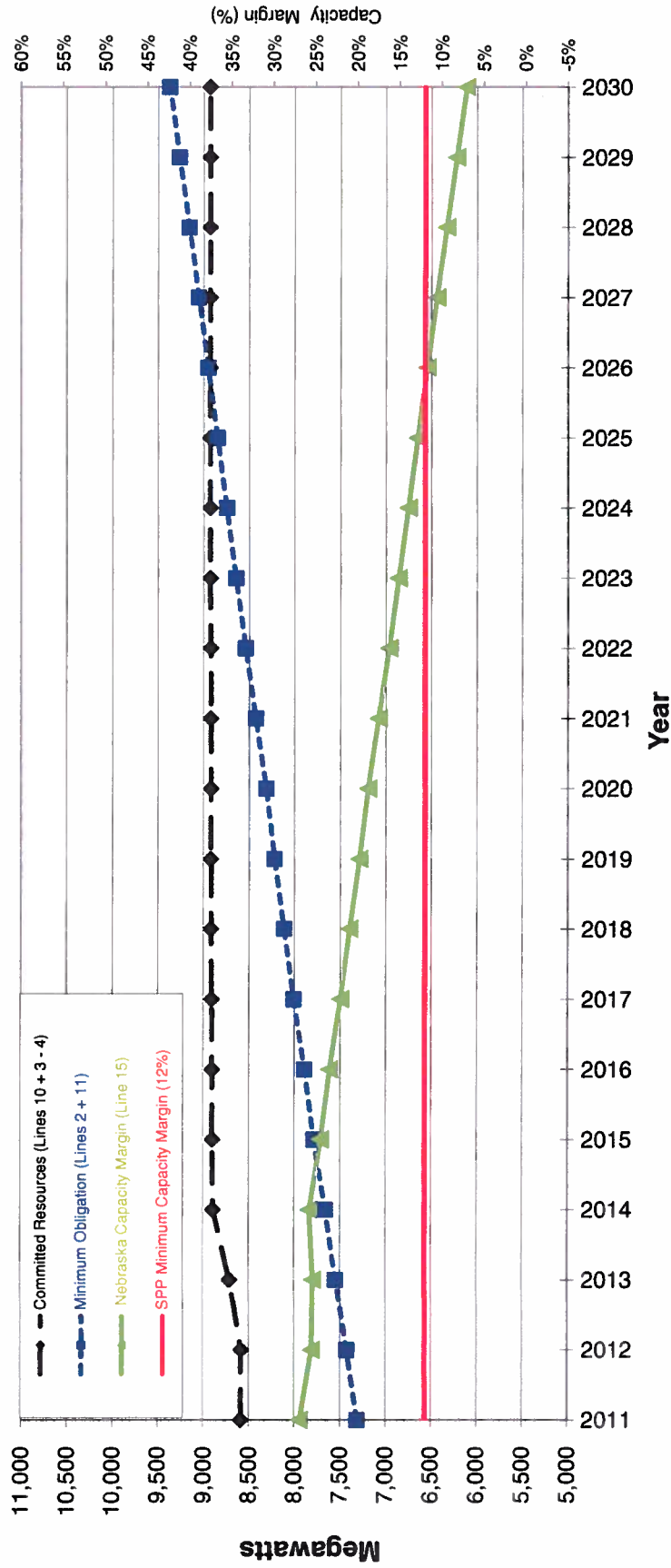


EXHIBIT 2
NEBRASKA STATEWIDE
Committed Load & Generating Capability in Megawatts
Summer Conditions (May 1 to October 31)

Year	2011	2012	2013	2014	2015	2016	2017	2018	2019	2020	2021	2022	2023	2024	2025	2026	2027	2028	2029	2030	
1 Seasonal System Demand	6,553	6,652	6,761	6,861	6,973	7,064	7,170	7,262	7,356	7,436	7,537	7,636	7,730	7,820	7,909	7,999	8,090	8,182	8,277	8,370	1.30%
2 Annual System Demand	6,553	6,652	6,761	6,861	6,973	7,064	7,170	7,262	7,356	7,436	7,537	7,636	7,730	7,820	7,909	7,999	8,090	8,182	8,277	8,370	
3 Firm Purchases - Total	1,106	1,107	1,112	1,118	1,121	1,124	1,126	1,129	1,132	1,131	1,131	1,132	1,132	1,135	1,137	1,135	1,134	1,134	1,134	1,133	1,132
4 Firm Sales - Total	102	122	122	122	122	122	122	122	122	123	123	123	123	123	123	123	123	123	123	123	123
5 Seasonal Adjusted Net Demand (1-3+4)	5,549	5,667	5,770	5,865	5,974	6,062	6,166	6,254	6,346	6,428	6,529	6,627	6,720	6,808	6,896	6,987	7,079	7,171	7,267	7,361	
6 Annual Adjusted Net Demand (2-3+4)	5,549	5,667	5,770	5,865	5,974	6,062	6,166	6,254	6,346	6,428	6,529	6,627	6,720	6,808	6,896	6,987	7,079	7,171	7,267	7,361	
7 Net Generating Capability (owned)	8,009	8,030	8,105	8,105	8,105	8,105	8,105	8,105	8,105	8,105	8,105	8,105	8,110	8,105	8,105	8,105	8,105	8,105	8,105	8,105	8,105
8 Participation Purchase -Total	644	635	633	632	631	629	626	625	626	627	628	629	630	581	582	583	584	585	586	587	587
9 Participation Sales -Total	1,069	1,064	1,014	839	834	829	824	819	819	819	819	819	819	769	769	769	769	769	769	769	769
10 Adjusted Net Capability (7+8-9)	7,584	7,601	7,723	7,897	7,901	7,904	7,907	7,911	7,911	7,912	7,914	7,914	7,920	7,916	7,917	7,918	7,919	7,920	7,921	7,922	7,922
11 Net Reserve Capacity Obligation (6 x 0.136)	757	773	787	800	815	827	841	853	865	876	890	904	916	928	940	953	965	978	991	1,004	1,004
12 Total Firm Capacity Obligation (5+11)	6,306	6,440	6,557	6,665	6,789	6,889	7,007	7,107	7,211	7,304	7,419	7,531	7,636	7,736	7,836	7,940	8,044	8,149	8,258	8,365	8,365
13 Surplus or Deficit (-) Capacity @ Minimum Obligation (10-12)	1,278	1,161	1,166	1,232	1,112	1,015	900	804	700	608	495	383	284	180	81	-22	-125	-229	-337	-443	-443
14 Reserve Margin (10-6)/6	36.7%	34.1%	33.8%	34.6%	32.3%	30.4%	28.2%	26.5%	24.7%	23.1%	21.2%	19.4%	17.9%	16.3%	14.8%	13.3%	11.9%	10.4%	9.0%	7.6%	7.6%
15 Capacity Margin (10-6)/10	26.8%	25.4%	25.3%	25.7%	24.4%	23.3%	22.0%	20.9%	19.8%	18.8%	17.5%	16.3%	15.2%	14.0%	12.9%	11.8%	10.6%	9.5%	8.3%	7.1%	7.1%

EXHIBIT 3 Statewide Capacity vs. Obligation Committed, Planned & Studied Resources

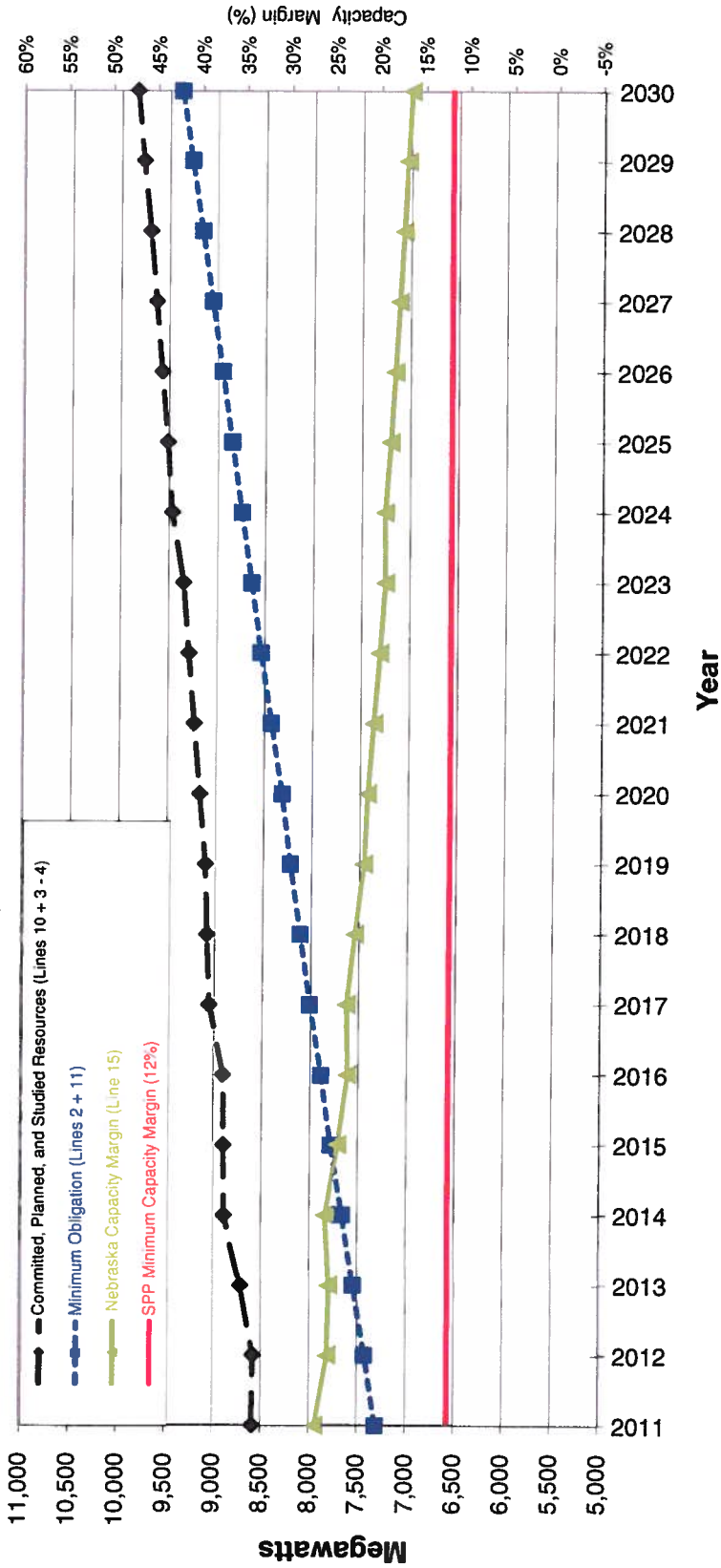


EXHIBIT 4
NEBRASKA STATEWIDE
Committed, Planned & Studied Load & Generating Capability in Megawatts
Summer Conditions (May 1 to October 31)

Year	2011	2012	2013	2014	2015	2016	2017	2018	2019	2020	2021	2022	2023	2024	2025	2026	2027	2028	2029	2030
1 Seasonal System Demand	6,553	6,652	6,761	6,861	6,973	7,064	7,170	7,262	7,356	7,436	7,537	7,636	7,730	7,820	7,909	7,999	8,090	8,182	8,277	8,370
2 Annual System Demand	6,553	6,652	6,761	6,861	6,973	7,064	7,170	7,262	7,356	7,436	7,537	7,636	7,730	7,820	7,909	7,999	8,090	8,182	8,277	8,370
3 Firm Purchases - Total	1,106	1,107	1,112	1,118	1,121	1,124	1,126	1,129	1,132	1,131	1,131	1,132	1,132	1,135	1,137	1,135	1,134	1,134	1,133	1,132
4 Firm Sales - Total	102	122	122	122	122	122	122	122	122	123	123	123	123	123	123	123	123	123	123	123
5 Seasonal Adjusted Net Demand (1-3+4)	5,549	5,667	5,770	5,865	5,974	6,062	6,166	6,254	6,346	6,428	6,529	6,627	6,720	6,808	6,896	6,987	7,079	7,171	7,267	7,361
6 Annual Adjusted Net Demand (2-3+4)	5,549	5,667	5,770	5,865	5,974	6,062	6,166	6,254	6,346	6,428	6,529	6,627	6,720	6,808	6,896	6,987	7,079	7,171	7,267	7,361
7 Net Generating Capability (owned)	8,009	8,030	8,105	8,105	8,105	8,105	8,251	8,271	8,291	8,354	8,415	8,471	8,529	8,643	8,688	8,749	8,810	8,872	8,944	9,011
8 Participation Purchase -Total	644	635	633	632	631	629	626	625	626	627	628	629	630	581	582	583	584	585	586	587
9 Participation Sales -Total	1,069	1,064	1,014	839	834	829	824	819	819	819	819	819	819	769	769	769	769	769	769	769
10 Adjusted Net Capability (7+8-9)	7,584	7,601	7,723	7,897	7,901	7,904	8,053	8,077	8,097	8,161	8,224	8,280	8,339	8,454	8,500	8,562	8,624	8,687	8,760	8,828
11 Net Reserve Capacity Obligation (6 x 0.136)	757	773	787	800	815	827	841	853	865	876	890	904	916	928	940	953	965	978	991	1,004
12 Total Firm Capacity Obligation (5+11)	6,306	6,440	6,557	6,665	6,789	6,889	7,007	7,107	7,212	7,304	7,419	7,530	7,637	7,736	7,836	7,940	8,044	8,149	8,258	8,364
13 Surplus or Deficit (-) Capacity @ Minimum Obligation (10-12)	1,279	1,160	1,166	1,233	1,112	1,015	1,046	969	886	857	804	750	703	718	664	622	580	539	502	464
14 Reserve Margin ((10-9)/6)	36.7%	34.1%	33.8%	34.7%	32.3%	30.4%	30.6%	29.1%	27.6%	27.0%	26.0%	25.0%	24.1%	24.2%	23.3%	22.5%	21.8%	21.1%	20.5%	19.9%
15 Capacity Margin ((10-6)/10)	26.8%	25.4%	25.3%	25.7%	24.4%	23.3%	23.4%	22.6%	21.6%	21.2%	20.6%	20.0%	19.4%	19.5%	18.9%	18.4%	17.9%	17.5%	17.0%	16.6%

EXHIBIT 5 Committed, Planned and Studied Accredited Capability

Utility	Unit Name	Unit Type	Fuel Type	Accredited Capacity	2011	2012	2013	2014	2015	2016	2017	2018	2019	2020	2021	2022	2023	2024	2025	2026	2027	2028	2029	2030
Falls City	Future Base			0.0	0	0	0	0	0	0	0	0	0	0	0	0	0	0	0	0	0	0	0	0
	Total	S		0.0	0	0	0	0	0	0	0	0	0	0	0	0	0	0	0	0	0	0	0	0
	Future Base			20.0	0	0	0	0	0	0	0	20	20	20	20	20	20	20	20	20	20	20	20	20
Fremont	Total	S		20.0	0	0	0	0	0	0	0	20	20	20	20	20	20	20	20	20	20	20	20	20
	Future Base			0.0	0	0	0	0	0	0	0	0	0	0	0	0	0	0	0	0	0	0	0	0
Grand Island	Total	S		0.0	0	0	0	0	0	0	0	0	0	0	0	0	0	0	0	0	0	0	0	0
	Future Base			0.0	0	0	0	0	0	0	0	0	0	0	0	0	0	0	0	0	0	0	0	0
Hastings	WEC #2	E	C Coal	220.0	220	220	220	220	220	220	220	220	220	220	220	220	220	220	220	220	220	220	220	220
	Future Peak			10.0	0	0	0	0	0	0	0	0	0	0	0	0	0	0	0	0	0	0	0	0
	Total	S		230.0	220	220	220	220	220	220	220	220	220	220	220	220	220	220	220	220	220	220	220	220
LES	J St Uprate		CT NG	3.3	0	0	0	0	0	0	0	0	0	3	3	3	3	3	3	3	3	3	3	3
	Rokeby Uprate		CT NG	18.7	0	0	0	0	0	0	0	0	0	19	19	19	19	19	19	19	19	19	19	19
	Future Base			79.0	0	0	0	0	0	0	0	0	0	0	0	0	0	0	0	15	30	45	65	79
LES	Total	S		101.0	0	0	0	0	0	0	0	0	0	22	22	22	22	22	22	37	52	67	87	101
	Future Base			75.0	0	0	0	0	0	0	0	0	0	0	0	0	0	0	75	75	75	75	75	75
MEAN	Total	S		75.0	0	0	0	0	0	0	0	0	0	0	0	0	0	0	75	75	75	75	75	75
	Future Base			0.0	0	0	0	0	0	0	0	0	0	0	0	0	0	0	0	0	0	0	0	0
Nebraska City	Total	S		0.0	0	0	0	0	0	0	0	0	0	0	0	0	0	0	0	0	0	0	0	0
	Future Base			0.0	0	0	0	0	0	0	0	0	0	0	0	0	0	0	0	0	0	0	0	0
NPPD	CNS HP Turbine Replacement	S	N UR	5.0	0	0	0	0	0	0	5	5	5	5	5	5	5	5	5	5	5	5	5	5
	CNS Extended Power Uprate	S	N UR	141.0	0	0	0	0	0	0	141	141	141	141	141	141	141	141	141	141	141	141	141	141
	Future Peak			0.0	0	0	0	0	0	0	0	0	0	0	0	0	0	0	0	0	0	0	0	0
	Future Intermediate			0.0	0	0	0	0	0	0	0	0	0	0	0	0	0	0	0	0	0	0	0	0
	Future Base			0.0	0	0	0	0	0	0	0	0	0	0	0	0	0	0	0	0	0	0	0	0
	Total	S		146.0	0	0	0	0	0	0	146	146	146	146	146	146	146	146	146	146	146	146	146	146
	Future Base			75.0	0	0	0	0	0	0	0	0	0	0	0	0	0	0	75	75	75	75	75	75
OPPD	Total	S		346.0	0	0	0	0	0	0	0	0	0	0	0	0	0	23	67	112	158	204	251	298
	Future Intermediate			208.0	0	0	0	0	0	0	0	0	0	0	0	0	0	0	0	0	0	0	0	0
OPPD	Total	S		629.0	0	0	0	0	0	0	0	0	0	20	61	122	178	208	208	208	208	208	208	208
	Future Base			1201.0	220	220	220	220	220	220	220	220	220	220	220	220	220	220	220	220	220	220	220	220
Nebraska Grand Total																								
Unit Type	Fuel Type	New Existing	2011	2012	2013	2014	2015	2016	2017	2018	2019	2020	2021	2022	2023	2024	2025	2026	2027	2028	2029	2030		
H-Hydro	HS-Run of River	Committed	0	0	0	0	0	0	0	0	0	0	0	0	0	0	0	0	0	0	0	0	0	
D-Diesel	NG-Natural Gas	Planned	0	0	0	0	0	0	0	0	0	0	0	0	0	0	0	0	0	0	0	0	0	
N-Nuclear	O-Oil	Future Renewable	0	0	0	0	0	0	0	0	0	0	0	0	0	0	0	0	0	0	0	0	0	
CT-Combustion Turbine	Coal-Coal	Future Peak	0	0	0	0	0	0	0	0	0	0	0	0	0	0	0	0	0	0	0	0	0	
CC-Combined Cycle	HR-Reservoir	Future Intermediate	0	0	0	0	0	0	0	0	0	0	0	0	0	0	0	0	0	0	0	0	0	
C-Pulverized Coal	UR-Uranium	TOTAL	220	220	220	220	220	220	220	220	220	220	220	220	220	220	220	220	220	220	220	220	220	
R-Renewable	Wind-Wind		0	0	0	0	0	0	0	0	0	0	0	0	0	0	0	0	0	0	0	0	0	
L-Landfill Gas	L-Landfill Gas		0	0	0	0	0	0	0	0	0	0	0	0	0	0	0	0	0	0	0	0	0	

EXHIBIT 6
Renewable Energy (Nameplate)

Utility	Unit Name	Existing	Committed	Planned	Studied	Unit Type	Fuel Type	Nameplate	2011	2012	2013	2014	2015	2016	2017	2018	2019	2020	2021	2022	2023	2024	2025	2026	2027	2028	2029	2030	
Falls City	Future Renewable				S	R Wind	0.0	0	0	0	0	0	0	0	0	0	0	0	0	0	0	0	0	0	0	0	0	0	0
Fremont	Future Renewable				S	R Wind	0.0	0	0	0	0	0	0	0	0	0	0	0	0	0	0	0	0	0	0	0	0	0	0
Grand Island	Future Renewable				S	R Wind	0.0	0	0	0	0	0	0	0	0	0	0	0	0	0	0	0	0	0	0	0	0	0	0
Hastings	Future Renewable				S	R Wind	0.0	0	0	0	0	0	0	0	0	0	0	0	0	0	0	0	0	0	0	0	0	0	0
LES	Lincoln	E				R Wind	1.3	1.32	1.32	1.32	1.32	1.32	1.32	1.32	1.32	1.32	0	0	0	0	0	0	0	0	0	0	0	0	0
LES	Future Renewable				S	R Wind	0.0	0	0	0	0	0	0	0	0	0	0	0	0	0	0	0	0	0	0	0	0	0	0
MEAN	Kimball	E				R Wind	10.5	10.5	10.5	10.5	10.5	10.5	10.5	10.5	10.5	10.5	10.5	10.5	10.5	10.5	0	0	0	0	0	0	0	0	0
MEAN	Future Renewable				S	R Wind	0.0	0	0	0	0	0	0	0	0	0	0	0	0	0	0	0	0	0	0	0	0	0	0
Nebraska City	Future Renewable				S	R Wind	0.0	0	0	0	0	0	0	0	0	0	0	0	0	0	0	0	0	0	0	0	0	0	0
NPPD	Ainsworth	E				R Wind	59.4	59.4	59.4	59.4	59.4	59.4	59.4	59.4	59.4	59.4	59.4	59.4	59.4	59.4	59.4	59.4	59.4	59.4	59.4	59.4	59.4	59.4	59.4
NPPD	Eikhorn Ridge	E				R Wind	80.0	80	80	80	80	80	80	80	80	80	80	80	80	80	80	80	80	80	80	80	80	80	80
NPPD	Laredo Ridge	E				R Wind	80.0	80	80	80	80	80	80	80	80	80	80	80	80	80	80	80	80	80	80	80	80	80	80
NPPD	Springview		C			R Wind	3.0	3	3	3	3	3	3	3	3	3	3	3	3	3	3	3	3	3	3	3	3	3	3
NPPD	Broken Bow I		C			R Wind	80.0	0	0	80	80	80	80	80	80	80	80	80	80	80	80	80	80	80	80	80	80	80	80
NPPD	Broken Bow II		C	P		R Wind	75.0	0	0	75	75	75	75	75	75	75	75	75	75	75	75	75	75	75	75	75	75	75	75
NPPD	Crofton Hills		C			R Wind	40.0	0	0	40	40	40	40	40	40	40	40	40	40	40	40	40	40	40	40	40	40	40	40
NPPD	Future Renewable		C			R Wind	277.0	0	0	0	0	0	0	0	100	227	227	227	277	277	277	277	277	277	277	277	277	277	277
OPPD	Elk City Landfill	E				R L	6.1	6.1	6.1	6.1	6.1	6.1	6.1	6.1	6.1	6.1	6.1	6.1	6.1	6.1	6.1	6.1	6.1	6.1	6.1	6.1	6.1	6.1	6.1
OPPD	Valley Wind Turbine	E				R Wind	0.7	0.66	0.66	0.66	0.66	0.66	0.66	0.66	0.66	0.66	0.66	0.66	0.66	0.66	0	0	0	0	0	0	0	0	0
OPPD	Fiat Water Wind	E				R Wind	60.0	60	60	60	60	60	60	60	60	60	60	60	60	60	60	60	60	60	60	60	60	60	60
OPPD	Petersburg		C			R Wind	40.5	0	40.5	40.5	40.5	40.5	40.5	40.5	40.5	40.5	40.5	40.5	40.5	40.5	40.5	40.5	40.5	40.5	40.5	40.5	40.5	40.5	40.5
OPPD	Future Renewable		C			R Wind	340.0	0	0	0	0	0	0	0	0	100	100	100	180	180	180	180	180	260	260	260	340	340	
Nebraska Grand Total							1061.0	298	341	536	536	536	536	536	636	863	862	942	992	981	981	981	1061	1061	1002	1002	1002	1002	

Unit Type	Fuel Type	2011	2012	2013	2014	2015	2016	2017	2018	2019	2020	2021	2022	2023	2024	2025	2026	2027	2028	2029	2030
Existing	Wind-Wind	298	298	298	298	298	298	298	298	297	297	297	286	286	286	286	286	226	226	146	146
Committed	L-Landfill Gas	0	44	164	164	164	164	164	164	164	164	164	164	164	164	164	164	164	164	164	164
Planned		0	0	75	75	75	75	75	75	75	75	75	75	75	75	75	75	75	75	75	75
Studied		0	0	0	0	0	0	100	327	327	407	457	457	457	457	537	537	537	537	537	537
TOTAL		298	341	536	536	536	636	863	862	942	992	981	981	981	981	1061	1061	1002	1002	1002	1002

EXHIBIT 7
2011 Existing Generating Capability Data

Utility	Unit Name	Duty Cycle	Unit Type	Fuel Type	Commercial	Summer	Summer
					Operation	Accredited	Utility
					Date	Capacity	Capacity
Falls City	Falls City #1	P	D	O	1930	0.70	
	Falls City #2	P	D	O	1937	1.00	
	Falls City #3	P	D	NG/O	1965	2.30	
	Falls City #4	P	D	NG/O	1946	0.80	
	Falls City #5	P	D	NG/O	1951	1.40	
	Falls City #6	P	D	NG/O	1958	2.00	
	Falls City #7	P	D	NG/O	1972	6.20	
	Falls City #8	P	D	NG/O	1981	6.00	
Falls City	Total						20.4
Fremont	Fremont #6	B	F	C/NG	1958	15.60	
	Fremont #7	B	F	C/NG	1963	20.50	
	Fremont #8	B	F	C/NG	1976	85.00	
	CT		CT	NG/O	2003	36.00	
Fremont	Total						157.1
Grand Island	Burdick #1	P	F	NG/O	1957	16.00	
	Burdick #2	P	F	NG/O	1963	22.00	
	Burdick #3	P	F	NG/O	1972	54.00	
	Burdick GT1	P	CT	NG/O	1968	13.00	
	Burdick GT2	P	CT	NG/O	2003	34.00	
	Burdick GT3	P	CT	NG/O	2003	34.00	
	Platte Generating Station	B	F	C	1982	100.00	
Grand Island	Total						273.0
Hastings	Whelan Energy Center #1	B	F	C	1981	77.00	
	Whelan Energy Center #2	B	F	C	2011	220.00	
	Hastings-NDS#4	P	F	NG/O	1957	15.00	
	Hastings-NDS#5	P	F	NG/O	1967	23.00	
	DHPC-#1	P	CT	NG/O	1972	18.00	
Hastings	Total						353.0
LES	Laramie River #1	B	F	C	1982	188.69	
	Walter Scott #4	B	F	C	2007	101.28	
	J St	P	CT	NG/O	1972	27.00	
	Rokeby 1	P	CT	NG/O	1975	63.00	
	Rokeby 2	P	CT	NG/O	1997	86.30	
	Rokeby 3	P	CT	NG/O	2001	89.00	
	Wind Turbines #1-2	I	R	W	1999	0.00	
	Rokeby Black Start	P	D	O	1997	3.00	
	Terry Bundy	P	CC	NG/O	2003	120.30	
	Terry Bundy Black Start	P	CT	NG/O	2003	47.10	
LES	Total						727.3
MEAN	Ansley #1	P	D	NG/O	1972	0.40	
	Ansley #2	P	D	NG/O	1968	0.80	
	Arnold #1	P	D	NG/O	1960	0.40	
	Arnold #2	P	D	NG/O	1942	0.20	
	Arnold #3	P	D	NG/O	1946	0.30	
	Beaver City #1	P	D	NG/O	1958	0.40	
	Beaver City #2	P	D	NG/O	1961	0.30	
	Beaver City #4	P	D	NG/O	1968	0.45	
	Benkelman #1	P	D	NG/O	1968	0.75	
	Blue Hill#1	P	D	NG/O	1964	0.80	
	Blue Hill#2	P	D	O	1948	0.40	
	Broken Bow #1	P	D	O	1933	0.50	
	Broken Bow #2	P	D	NG/O	1971	3.20	
	Broken Bow #3	P	D	NG/O	1936	0.80	
	Broken Bow #4	P	D	NG/O	1949	0.80	
	Broken Bow #5	P	D	NG/O	1959	1.00	
	Broken Bow #6	P	D	NG/O	1961	2.00	
	Burwell#1	P	D	NG/O	1955	0.50	
	Burwell#2	P	D	NG/O	1962	0.70	
	Burwell#3	P	D	NG/O	1967	0.90	
	Burwell#4	P	D	NG/O	1972	0.90	
	Callaway #1	P	D	O	1936	0.18	
	Callaway #2	P	D	O	1948	0.18	
	Callaway #3	P	D	O	1958	0.50	
	Chappell #2	P	D	O	1945	0.30	
	Chappell #3	P	D	O	1982	0.90	
	Crete #1	P	D	NG/O	1939	0.50	
	Crete #2	P	D	NG/O	1955	1.10	
	Crete #3	P	D	NG/O	1951	0.90	
	Crete #4	P	D	NG/O	1947	0.90	

EXHIBIT 7
2011 Existing Generating Capability Data

Utility	Unit Name	Duty Cycle	Unit Type	Fuel Type	Commercial	Summer	Summer
					Operation	Accredited	Utility
					Date	Capacity	Capacity
MEAN (contd)	Crete #5	P	D	NG/O	1962	2.70	
	Crete #6	P	D	NG/O	1965	3.50	
	Crete #7	P	D	NG/O	1972	6.07	
	Curtis #1	P	D	NG/O	1975	1.20	
	Curtis #2	P	D	NG/O	1969	0.90	
	Curtis #3	P	D	NG/O	1955	0.90	
	Fairbury #2	P	F	NG/O	1948	4.30	
	Fairbury #4	P	F	NG/O	1966	11.00	
	Kimball #1	P	D	NG/O	1955	1.00	
	Kimball #2	P	D	NG/O	1956	0.90	
	Kimball #3	P	D	NG/O	1959	1.00	
	Kimball #4	P	D	NG/O	1960	0.90	
	Kimball #5	P	D	NG/O	1951	0.70	
	Kimball #7	P	D	NG/O	1975	3.50	
	Kimball Wind Turbines #1-7	I	R	W	2002	0.00	
	Oxford #1	P	D	O	1948	0.54	
	Oxford #2	P	D	NG/O	1952	0.53	
	Oxford #3	P	D	NG/O	1956	0.76	
	Oxford #4	P	D	NG/O	1956	0.47	
	Oxford #5	P	D	O	1972	1.00	
	Pender #1	P	D	O	1967	1.06	
	Pender #2	P	D	NG/O	1973	1.72	
	Pender #3	P	D	O	1953	0.44	
	Pender #4	P	D	O	1961	0.74	
	Red Cloud #2	P	D	NG/O	1953	0.50	
	Red Cloud #3	P	D	NG/O	1960	1.00	
	Red Cloud #4	P	D	NG/O	1968	1.00	
	Red Cloud #5	P	D	NG/O	1974	1.50	
	Sargent #1	P	D	NG/O	1963	0.00	
	Sargent #2	P	D	NG/O	1964	0.75	
	Sargent #3	P	D	NG/O	1966	0.25	
	Sidney #1	P	D	NG/O	1967	1.00	
	Sidney #2	P	D	NG/O	1973	2.50	
	Sidney #3	P	D	O	1953	0.65	
	Sidney #4	P	D	NG/O	1961	0.85	
	Sidney #5	P	D	NG/O	1939	2.65	
	Stuart #1	P	D	NG/O	1965	0.75	
	Stuart #2	P	D	NG/O	1996	0.75	
	Stuart #3	P	D	O	1954	0.28	
	Stuart #4	P	D	O	1946	0.28	
	West Point #1	P	D	NG/O	1950	2.10	
	West Point #2	P	D	NG/O	1959	1.10	
	West Point #3	P	D	NG/O	1965	0.71	
	West Point #5	P	D	NG/O	1971	0.00	
	Laramie River #1	B	F	C	1982	10.00	
	Walter Scott #4	B	F	C	2007	56.60	
MEAN	Total						153.0
NPPD	Ainsworth Wind (NPPD)	I	R	W	2005	0.00	
	Auburn #1	P	D	NG/O	1982	2.10	
	Auburn #2	P	D	NG/O	1949	0.50	
	Auburn #4	P	D	NG/O	1993	3.30	
	Auburn #5	P	D	NG/O	1973	3.00	
	Auburn #6	P	D	NG/O	1967	2.20	
	Auburn #7	P	D	NG/O	1987	5.20	
	Beatrice Power Station	I	CC	NG	2005	217.00	
	Belleville 4	P	D	NG/O	1955	0.00	
	Belleville 5	P	D	NG/O	1961	1.40	
	Belleville 6	P	D	NG/O	1966	2.50	
	Belleville 7	P	D	NG/O	1971	3.30	
	Belleville 8	P	D	NG/O	2006	2.80	
	Broken Bow Wind	I	R	W	2013	0.00	
	Cambridge	P	D	NG	1972	3.00	
	Canaday	P	F	NG/O	1958	92.00	
	Columbus 1	B	H	HR	1936	15.00	
	Columbus 2	B	H	HR	1936	15.00	
	Columbus 3	B	H	HR	1936	14.90	
	Cooper	B	N	UR	1974	765.88	
	Crofton Hills Wind	I	R	W	2013	0.00	
	David City 1	P	D	NG/O	1960	1.30	
	David City 2	P	D	NG/O	1949	0.80	
	David City 3	P	D	NG/O	1955	0.90	
	David City 4	P	D	NG/O	1966	1.80	
	David City 5	P	D	O	1996	1.33	
	David City 6	P	D	O	1996	1.33	

EXHIBIT 7
2011 Existing Generating Capability Data

Utility	Unit Name	Duty Cycle	Unit Type	Fuel Type	Commercial	Summer	Summer
					Operation	Accredited	Utility
					Date	Capacity	Capacity
NPPD (contd)	David City 7	P	D	O	1996	1.34	
	Deshler 1	P	D	NG/O	2001	0.27	
	Deshler 2	P	D	NG/O	1950	0.29	
	Deshler 3	P	D	NG/O	1998	1.10	
	Deshler 4	P	D	NG/O	1956	0.60	
	Elkhorn Ridge Wind Farm	I	R	W	2009	0.00	
	Emerson #2	P	D	NG/O	1968	1.15	
	Emerson #3	P	D	NG/O	1948	0.15	
	Emerson #4	P	D	O	1958	0.40	
	Franklin 1	P	D	NG	1963	0.65	
	Franklin 2	P	D	NG	1974	1.35	
	Franklin 3	P	D	NG	1968	1.05	
	Franklin 4	P	D	NG	1955	0.70	
	Gentleman 1	B	F	C	1979	665.00	
	Gentleman 2	B	F	C	1982	700.00	
	Hallam (Black Start)	P	CT	NG/O	1973	45.00	
	Hebron	P	CT	NG/O	1973	41.00	
	Holdrege 1	P	D	O	1938	0.00	
	Holdrege 2	P	D	O	1952	0.00	
	Holdrege 3	P	D	O	1945	0.00	
	Jeffrey 1	B	H	HR	1940	9.00	
	Jeffrey 2	B	H	HR	1940	9.00	
	Johnson I 1	B	H	HR	1940	9.00	
	Johnson I 2	B	H	HR	1940	9.00	
	Johnson II	B	H	HR	1940	18.00	
	Kearney	B	H	HR	1921	1.00	
	Kingsley(Black Start)	B	H	HR	1985	37.50	
	Laredo Ridge Wind Farm	I	R	W	2011	0.00	
	Lodgepole 1	P	D	O	1934	0.00	
	Lodgepole 2	P	D	O	1947	0.00	
	Lyons 2	P	D	O	1953	0.20	
	Lyons 3	P	D	O	1960	0.30	
	Lyons 4	P	D	O	1967	0.60	
	Madison 1	P	D	NG/O	1969	1.70	
	Madison 2	P	D	NG/O	1959	0.95	
	Madison 3	P	D	NG/O	1953	0.85	
	Madison 4	P	D	O	1946	0.50	
	McCook(Black Start)	P	CT	O	1973	41.00	
	Monroe	B	H	HS	1936	2.50	
	Mullen #1	P	D	O	1958	0.35	
	Mullen #2	P	D	O	1966	0.65	
	North Platte 1(Black Start)	B	H	HR	1935	11.95	
	North Platte 2(Black Start)	B	H	HR	1935	11.95	
	Ord 1	P	D	NG/O	1973	3.20	
	Ord 2	P	D	NG/O	1966	1.00	
	Ord 3	P	D	NG/O	1963	2.00	
	Ord 4	P	D	O	1997	1.40	
	Ord 5	P	D	O	1997	1.40	
	Sheldon 1	B	F	C	1961	105.00	
	Sheldon 2	B	F	C	1965	120.00	
	Spalding 2	P	D	O	1955	0.40	
	Spalding 3	P	D	O	1975	1.40	
	Spalding 4	P	D	O	1999	0.20	
	Spalding 5	P	D	O	2001	0.25	
	Spencer 1	B	H	HS	1927	1.00	
	Spencer 2	B	H	HS	1952	0.80	
	Springview Wind	I	R	W	2012	0.00	
	Sutherland 1	P	D	O	1952	0.45	
	Sutherland 2	P	D	O	1959	0.85	
	Sutherland 3	P	D	O	1935	0.00	
	Sutherland 4	P	D	O	1964	1.35	
	Wahoo #1	P	D	NG/O	1960	1.70	
	Wahoo #3	P	D	NG/O	1973	3.60	
	Wahoo #5	P	D	NG/O	1952	1.80	
	Wahoo #6	P	D	NG/O	1969	2.90	
	Wakefield 2	P	D	NG/O	1955	0.54	
	Wakefield 4	P	D	NG/O	1961	0.69	
	Wakefield 5	P	D	NG/O	1966	1.08	
	Wakefield 6	P	D	NG/O	1971	1.13	
	Wayne 1	P	D	O	1951	0.75	
	Wayne 3	P	D	O	1956	1.75	
	Wayne 4	P	D	O	1960	1.85	
	Wayne 5	P	D	O	1966	3.25	
	Wayne 6	P	D	O	1968	4.90	
	Wayne 7	P	D	O	1998	3.25	

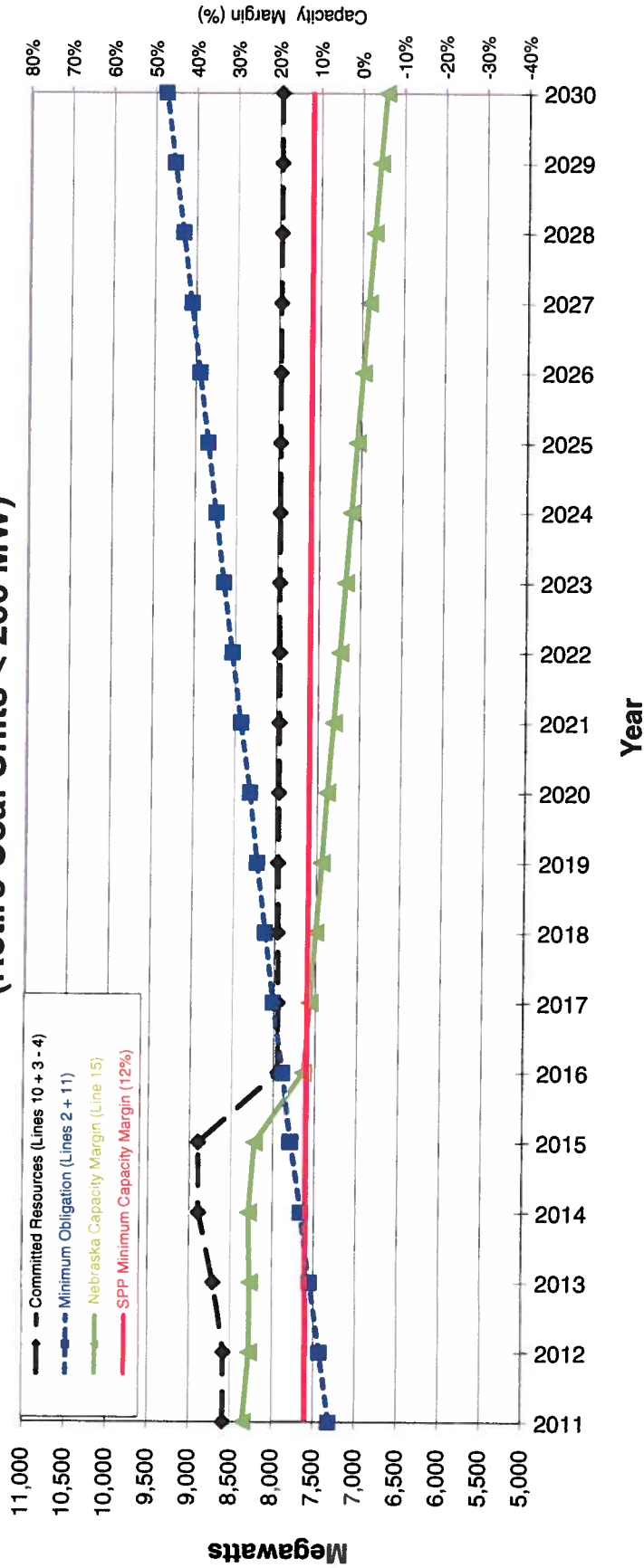
EXHIBIT 7 2011 Existing Generating Capability Data

Utility	Unit Name	Duty Cycle	Unit Type	Fuel Type	Commercial	Summer	Summer	
					Operation	Accredited	Utility	
					Date	Capacity	Capacity	
NPPD (contd)	Wayne 8	P	D	O	1998	3.25		
	Wilber 4	P	D	O	1949	0.78		
	Wilber 5	P	D	O	1958	0.59		
	Wilber 6	P	D	O	1997	1.57		
	York 1	P	D	O	1980	0.00		
	York 2	P	D	O	1996	0.00		
NPPD	Total					<u>0.00</u>	3,058.6	
Nebraska City	Nebraska City #2 Black start	P	D	NG/O	1953	1.00		
	Nebraska City #3	P	D	NG/O	1955	2.00		
	Nebraska City #4	P	D	NG/O	1957	2.50		
	Nebraska City #5 Black start	P	D	NG/O	1964	1.60		
	Nebraska City #6	P	D	NG/O	1967	1.50		
	Nebraska City #7	P	D	NG/O	1969	1.50		
	Nebraska City #8	P	D	NG/O	1970	3.50		
	Nebraska City #9	P	D	NG/O	1974	5.60		
	Nebraska City #10	P	D	NG/O	1979	5.80		
	Nebraska City #11	P	D	NG/O	1998	3.80		
	Nebraska City #12	P	D	NG/O	1998	3.80		
	Nebraska City #13	P	D	O	1998	4.50		
	Nebraska City	Total					<u>4.50</u>	37.1
OPPD	Fort Calhoun #1	B	N	UR	1973	478.60		
	Nebraska City #1	B	F	C	1979	651.50		
	Nebraska City #2	B	F	C	2009	684.60		
	North Omaha #1	B	F	C/NG	1954	79.30		
	North Omaha #2	B	F	C/NG	1957	107.70		
	North Omaha #3	B	F	C/NG	1959	108.40		
	North Omaha #4	B	F	C/NG	1963	138.40		
	North Omaha #5	B	F	C/NG	1968	204.40		
	Jones St. #1	P	CT	O	1973	62.80		
	Jones St. #2	P	CT	O	1973	62.40		
	Cass County #1	P	CT	NG	2003	161.50		
	Cass County #2	P	CT	NG	2003	161.60		
	Sarpy County #1	P	CT	NG/O	1972	55.50		
	Sarpy County #2	P	CT	NG/O	1972	55.70		
	Sarpy County #3	P	CT	NG/O	1996	105.10		
	Sarpy County #4	P	CT	NG/O	2000	47.60		
	Sarpy County #5	P	CT	NG/O	2000	48.00		
	Sarpy Co. Black Start	P	D	O	1996	3.40		
	Elk City Station #1-4	B	R	L	2002	3.13		
	Elk City Station #5-8	B	R	L	2006	3.11		
	Flat Water Wind Farm	I	R	W	2011	0.00		
	Valley Wind Turbine #1	I	R	W	2001	0.00		
	Tecumseh #1	P	D	O	1949	0.60		
	Tecumseh #2	P	D	O	1968	1.40		
	Tecumseh #3	P	D	O	1952	1.00		
	Tecumseh #4	P	D	O	1960	1.20		
	Tecumseh #5	P	D	O	1993	2.40		
OPPD	Total					<u>2.40</u>	3,229.3	
Nebraska Grand Total							TOTAL	8,008.9

<u>Duty Cycle</u>	<u>Unit Type</u>	<u>Fuel type</u>	
B-Base	H-Hydro	HS-Run of River	HR- Reservoir
I-Intermediate	D-Diesel	NG-Natural Gas	UR-Uranium
P-Peaking	N-Nuclear	O-Oil	L=Landfill Gas
	CT-Comb Turbine	C-Coal	W-Wind
	CC-Comb Cycle		
	F-Fossil		
	R-Renewable		

	AGE TODAY - 2011					Total
	0-20	21-30	31-40	41-50	>50	
Small Coal (<250 MW)	220	100	162	443	416	1,341
Large Coal (>250 MW)	842	899	1,317	-	-	3,058
Nuclear	-	-	1,244	-	-	1,244
Renewables	6	38	-	-	128	172
Peaking/Intermediate	1,234	8	583	175	194	2,194
Existing	2,302	1,044	3,306	618	738	8,009
	29%	13%	41%	8%	9%	

Exhibit 8 Statewide Capacity vs. Obligation Committed Resources with SPP Future Scenario (Retire Coal Units < 200 MW)



“DATA FROM THE JULY 2012 STATEWIDE
COORDINATED LONG-RANGE POWER
SUPPLY PLAN”

Executive Summary

This report fulfills state statute 70-1026 following a request from the Nebraska Power Review Board to provide a research and conservation report on the sustainability efforts within Nebraska. This report was created with the support of many Nebraska utilities and the Nebraska Energy Office (NEO). Without their assistance, this report would not have been possible.

There are 162 utilities in Nebraska, of which 87 are participating in energy-efficiency programs. This report includes the results of many efforts in 2010, several of which are ongoing, and provides insight into future initiatives that are just on the horizon.

Utility Sustainability Goals

Lincoln Electric System (LES)

- Offset LES' projected five-year load growth through energy efficiency and renewable generation.

Omaha Public Power District (OPPD)

- Reduce peak demand by 50 megawatts (MW) by the end of 2012.
- Achieve 10 percent of energy sales to retail customers from renewable resources by the end of 2020.

Nebraska Public Power District (NPPD)

- Incorporate renewables in the total mix of NPPD-owned generation and contract purchases.
- Achieve 10 percent of the energy supply for NPPD's native load from renewable resources by 2020.
- Reduce native load energy sales by 13,700 megawatt-hours (MWh) in 2010.

Renewable Energy

Statewide in 2010, wind generation provided over 460,000 megawatt-hours (MWh) of electricity.

Energy Efficiency

Even greener than a kilowatt-hour (KWh) generated by a wind turbine on the Nebraska plains is a KWh that is not used.

The Nebraska Energy Office (NEO) and Nebraska utilities remain committed to providing programs and technologies designed to reduce energy consumption.

Through several energy-efficiency efforts tracked by NEO and Nebraska utilities in 2010, approximately 24 MW and 80,000 MWh were reduced. In addition, Nebraska utilities have the ability to reduce its peak demand by over nine percent through various demand-response programs.

Nebraska utilities provide opportunities for customers to save money and make their homes and businesses more comfortable, while reducing the need for more expensive power generation during peak periods, delaying the need to build additional power generation.

Nebraska's electric utilities have undertaken numerous energy-efficiency initiatives. However, national reports designed to quantify those successes may not always measure efforts that are the best fit for the state.

For example, the American Council for an Energy Efficient Economy (ACEEE) report ranks states' energy-efficiency initiatives. Points are awarded based on criteria of which Nebraska's electric utilities are directly responsible for approximately 30 percent of the total points awarded. The remaining points are made up in sectors like transportation, building codes and legislative policy.

This Research and Conservation Report reviews the sustainable efforts across the state to highlight the valuable strides Nebraska is making in energy efficiency and renewable energy.

Key Points

Nebraska utilities are maximizing investments by working with each other and organizations to stay informed of cutting-edge technology and best practices.

The utilities are consistently adopting additional research and development projects by partnering with numerous research organizations and local universities to determine the sustainability programs that best meet the needs of Nebraskans at the most economical price.



Research & Collaboration

Research has been done to understand the emerging trends and technology that will best meet the state's current and future sustainability needs. Nebraska utilities, NEO and others have contributed to better understand the various technologies and potential programs to identify those that best meet the needs of Nebraska consumers.

Nebraska utilities believe so strongly in providing customers with the most competitive, cost-effective service now and for years to come that they directly contributed upwards of \$5.5 million towards such research and collaboration in 2010. Perhaps even more impressive is the nearly \$129 million in total grants, matched funds, and Nebraska Energy Office loans used or earmarked for sustainable projects across the state.

Research Alliances

Many utilities have contributed to and participated in various research efforts and organizations, including the following:

Nebraska Clean Cities Coalition (NeC3)

Nebraska Clean Cities Coalition (NeC3) is a statewide coalition of public and private membership with a goal of improving sustainable environmental, economic and energy security. NeC3 supports partnerships, projects and programs that advance clean-burning fuels and vehicles in Nebraska and the region. NeC3 is fuel-neutral and promotes security and sustainability through fuel diversity.

Right, Municipal Energy Agency of Nebraska's (MEAN) seven-turbine wind farm near Kimball, Neb.

Below is the Chevy Volt, one of many new electric vehicles (EVs). Utilities are investigating how to best serve the growing group of customers who drive EVs.



American Wind Energy Association (AWEA)

With more than 2,500 members and advocates, AWEA is the hub of the wind energy industry. AWEA is a national trade association representing wind power project developers, equipment suppliers, service providers, parts manufacturers, utilities, researchers and others involved in the wind industry.

American Council on Renewable Energy (ACORE)

ACORE works to bring all forms of renewable energy into the mainstream of America's economy and lifestyle. ACORE accomplishes much of its work by convening the leaders across many sectors, publishing collaborative research and facilitating communications among members, stakeholders and the media.

Utility Wind Integration Group (UWIG)

UWIG's mission is to accelerate the development and application of good engineering and operational practices to support the appropriate integration of wind power into the electric system.

The group pursues its mission through the coordinated efforts of its members, in collaboration with wind industry stakeholders, including federal agencies, trade associations and industry research organizations.

Solar Electric Power Association (SEPA)

SEPA is an educational nonprofit organization dedicated to helping utilities integrate solar power into their energy portfolios. SEPA provides unbiased utility solar market intelligence, up-to-date information about technologies and business models, and peer-to-peer interaction.

Electric Power Research Institute (EPRI)

EPRI is an independent, nonprofit company performing research, development and demonstration in the electricity sector for the benefit of the public. Projects include new technologies, electric vehicles, smart grid, energy-storage and other sustainability programs.

Nebraska Energy Assistance Network (NEAN)

NEAN assists Nebraskans with their energy needs through education, advocacy and partnerships with fundraising and awareness campaigns about energy efficiency, weatherization and programs for low-income individuals and families.

E Source

E Source provides independent research, advice and information services to utilities, major energy users and other key players in the retail energy marketplace. Its mission is to increase the effectiveness of programs and customer relationships, while supporting the efficient and environmentally sound use of energy.

Omaha Community Center of Sustainability (OCCS)

The goal of the OCCS is to help the people of Omaha respond to the world's changing environment and economic conditions, and to transition to a more rational and efficient way of life.

OCCS accomplishes this by creating a living example and research center dedicated to sustainability. OCCS is a showcase of sustainable living and a center for education and research.

Smart Grid/Electric Vehicle Studies

Utilities have been investigating the potential impact of electric vehicles (EVs) being plugged into the power grid.

Although it may be years before such cars significantly penetrate the Nebraska market, utilities are in the process of laying the groundwork to be the "go-to" energy providers when customers have questions on electricity and EV-related technology. Some utilities have launched informative websites with toll-free help lines on the subject.

American Public Power Association (APPA)

APPA is the service organization for the nation's more than 2,000 community-owned electric utilities. Collectively, these utilities serve more than 46 million Americans.

Within the APPA is a group focused on research and development, funded by public power utilities. Established in 1980, the Demonstration of Energy-Efficient Developments (DEED) Program encourages activities that promote energy innovation, improve efficiencies and lower energy costs for public power customers.

The concept of smart grids is to digitally gather information to more efficiently distribute power.



APPA has shared the findings of its studies with Nebraska utilities, who have integrated those results into their sustainability programs.

Green Omaha Coalition (GOC)

The GOC exists to promote a healthy, sustainable community through partnerships, policy, and smart solutions using education, advocacy, and leadership. The GOC is comprised of more than 20 Omaha organizations, including OPPD, all of whose continued collaboration bolsters the efforts of the community in working towards a more sustainable Omaha.

Large Public Power Council (LPPC)

Comprised of 25 of the nation's largest locally owned and controlled, not-for-profit power systems, the LPPC works to develop and advance consumer-oriented positions on national energy issues.

Grants

DEED Grant Program: Digi Rooftop Units (RTUs)

OPPD received a \$50,000 grant to execute an innovative pilot for digital rooftop optimizers. Digi-RTU controllers are easily mounted to existing rooftop air conditioning units that greatly improve operating efficiency.

ENERGY STAR and ENERGY STAR Challenge

This is a \$15,000 grant to fully implement and document OPPD's efforts as an ENERGY STAR Partner. In addition, OPPD used the grant to develop best-practice guidelines to help other utilities start and/or maximize their participation as ENERGY STAR partners which help their customers participate in the ENERGY STAR partner challenge.

Measuring Airtightness in High-Rise Buildings

Loup Power District received a DEED grant to hire a student from the University of Nebraska to investigate the airtightness of a high-rise building, using the floor-by-floor,

blower-door method. If this method works, it will be easier to pinpoint which floors in a building may need repair.

Demand-Side Management: Student Internship

This grant was to hire an intern for a year, leveraging the DEED internship to help OPPD staff determine the optimal sustainability portfolio of programs, targeting various customer markets, which produced the best demand-reduction results.

Energy Usage: Student Internship

This DEED grant was for an intern to identify the best solution for providing customers with usage information, comparing their usage with that of other customers who live in similar-sized homes with comparable heating and cooling systems.

Clean Diesel

The Nebraska Department of Environmental Quality (NDEQ) awarded OPPD \$19,000 to reduce emissions by retrofitting ten of the utility's service vehicles. The grant was part of the Environmental Protection Agency's (EPA) \$1.73 million fund to reduce diesel emissions in Nebraska.

NDEQ Refrigerator and Freezer Recycling Program

The NDEQ provided \$219,000 to help subsidize the \$578,000 costs of a program that recycled more than 3,600 refrigerators in the state. Each refrigerator or freezer recycled costs around \$165 to incentivize, pick-up, and ensure that over 95 percent of the components and materials of the discarded appliance are either recycled for beneficial uses or eliminated in an environmentally responsible way. The remaining 5 percent is used to facilitate the decomposition of biodegradable landfill material.

Old refrigerators use up to four times more electricity than new ones. The environmental benefit for each appliance recycled is equivalent to taking two cars off the road for a year. Numerous utilities contributed to this effort. (See box at right.)

NDEQ Refrigerator and Freezer Recycling Participants

Auburn, Battle Creek, Brainard, Burt County Public Power District (PPD), Butler County PPD, Butler PPD, Cambridge, Cedar Knox PPD, Central City, Cornhusker PPD, Cuming County PPD, Custer PPD, David City, Dawson PPD, DeWitt, Elkhorn Rural PPD, Fairmont, Franklin, Friend, Giltner, Hebron, Hickman, Hildreth, Holbrook, Holdrege, Howard-Greeley Rural PPD, KBR Rural, Laurel, Lexington, Loup River PPD, Loup Valley Rural PPD, Madison, McCook PPD, Minden, Mullen, NPPD, Neligh, Nelson, Niobrara Valley Electric Membership, Norris PPD, North Central PPD, North Platte, Northeast Nebraska PPD, OPPD, Ord, Perennial PPD, Polk County PPD, Randolph, Schuyler, Scribner, Seward, Seward County PPD, South Central PPD, South Sioux City, Southern PPD, Southwest PPD, St. Paul, Stanton County PPD, Stromsburg, Superior, Sutton, Trenton, Twin Valleys PPD, Valentine, Wahoo, Wauneta, Wayne, Wilcox, Wymore.



A technician takes a pumping level measurement for a pump-efficiency test on an irrigation well.

USDA Rural Energy for America Program (REAP Grants)

As part of a two-year program that started in 2010, the U.S. Department of Agriculture awarded a \$100,000 grant to both NPPD and OPPD for conducting energy-efficiency audits for Nebraska ag producers and rural businesses. NPPD completed 125 such audits in 2010, while OPPD completed seven. The USDA also provided a \$1.8 million grant directly to these producers and businesses to implement audit recommendations.

67

Green Jobs Training: syNErgy Partnership

syNErgy is funded through a U.S. Department of Labor (DOL) State Energy Sector Partnership grant and coordinated through the Nebraska Department of Labor.

The goal of syNErgy is to place skilled workers in unsubsidized employment in the renewable energy and energy-efficiency fields by preserving and creating new jobs in power generation, transportation, building, agricultural and waste-management markets, while reducing the environmental footprint of these energy-intensive industries.

Nebraska received a total of \$4.8 million in syNErgy grants. The program created partnerships with multiple community colleges, private employers, Metropolitan Utilities District (MUD), LES, NPPD and OPPD.

U.S. Department of Energy (DOE): Creighton University Renewable Energy Studies

This \$1.4 million project is a collaborative effort with OPPD. A total of \$1.14 million came from federal funds requested by Nebraska Rep. Lee Terry and Sen. Ben Nelson.

The DOE will administer the money as part of its mission to promote renewable energy. An additional \$1.2 million funded the development of the curriculum for a new renewable energy degree program. Creighton University also will serve as a resource for utility customers considering the use of alternative energy projects on commercial sites.

DOE's reEnergize Program

The DOE's Better Buildings Program awarded \$10 million to create the reEnergize program.

reEnergize is a collaborative effort between the cities of Omaha and Lincoln to build energy-smart communities with their partners.

Over a three-year period, the plan is to work with highly qualified contractors to complete energy evaluations on a total of 263 commercial and nonprofit buildings, and make energy upgrades on 3,193 residences throughout the five-stage program.

DOE American Recovery Reinvestment Act (ARRA) or Stimulus Grants for Renewable Energy

The goals of the Advanced Renewable Energy Project grants are to (1) increase renewable

energy generation in Nebraska, (2) demonstrate the use of renewable energy technologies, (3) deploy cutting-edge renewable technologies, (4) generate energy from renewable resources on or before March 2012, (5) avoid greenhouse gas emissions and (6) leverage funds and create jobs.

- Estimated energy savings: 400 MWh annually
- State costs (ARRA): \$3.5 million
- Non-state costs (leveraged): \$4.6 million

Selected Advanced Renewable Energy Project Grants

Applicant	Renewable Energy Type	Project Location	Contract Amount	Match Amount	Total Project Cost	Funds Expended as of September 30, 2011*
AGP Corn Processing, Inc.	Biomass	Hastings/ Adams County	\$275,000	\$50,000	\$325,000	\$247,500
Allen Fleischman	Solar	Tekamah/ Washington County	\$106,250	\$17,000	\$123,250	\$95,625
Bluestem LLC	Wind	Springview/ Keya Paha County	\$2,300,000	\$4,338,000	\$6,638,000	\$2,300,000
David DeBoer	Solar	Ft. Calhoun/ Washington County	\$11,223	\$1,981	\$13,204	\$9,023
Design Plastics, Inc.	Wind	Omaha - Fremont/ Douglas - Dodge Counties	\$148,000	\$26,800	\$174,800	\$79,526
Ho-Chunk CDC	Solar	Winnebago/ Thurston County	\$249,780	\$40,000	\$289,780	\$202,599
Morrissey Engineering	Solar	Omaha/ Douglas County	\$72,884	\$12,862	\$85,746	\$72,883
NPPD	Solar	Norfolk/ Pierce County	\$344,958	\$70,654	\$415,612	\$344,958
TOTALS			\$3,508,095	\$4,557,297	\$8,065,392	\$3,352,116

* Some of these projects are complete, but payment claims have not been submitted to the agency. Some projects are awaiting shipment of materials to begin construction. Total expenses indicated in the chart are based on a cost-reimbursement basis. For each project, five percent is withheld until all contractual obligations, including monitoring of the project by agency staff, have been completed. These figures are as reported by NEO as of October 2011.

2010 Energy Efficiency and Conservation Block Grant Funded Projects (continued on next page)

Applicant Name	Amount Requested	Match	Total Project Cost
Adams County	\$142,918	\$35,730	\$178,648
Alma	\$41,515	\$10,379	\$51,894
Arthur County	\$40,000	\$10,000	\$50,000
Atkinson	\$3,087	\$772	\$3,859
Auburn	\$12,415	\$3,104	\$15,519
Aurora	\$96,242	\$24,063	\$120,305
Banner County	\$82,360	\$20,590	\$102,950
Bassett	\$21,064	\$5,266	\$26,330
Beatrice	\$157,170	\$60,000	\$217,170
Blair	\$248,686	\$74,286	\$322,972
Broadwater	\$60,360	\$15,090	\$75,450
Broken Bow	\$151,664	\$37,916	\$189,580
Burt County	\$150,542	\$37,636	\$188,178
Butler County	\$118,645	\$80,000	\$198,645
Callaway	\$24,329	\$6,082	\$30,411
Cambridge	\$250,000	\$151,727	\$401,727
Central City	\$179,088	\$56,748	\$235,836
Chadron	\$59,054	\$14,764	\$73,818
Clarks	\$17,894	\$4,474	\$22,368
Clay County	\$13,287	\$3,322	\$16,609
Coleridge	\$59,560	\$14,890	\$74,450
Colfax County	\$39,194	\$9,799	\$48,993
Cortland	\$6,000	\$1,500	\$7,500
Cuming County	\$250,000	\$114,378	\$364,378
Dakota City	\$13,099	\$3,275	\$16,374
Dawes County	\$180,000	\$80,000	\$260,000
Diller	\$19,556	\$4,889	\$24,445
Dodge County	\$159,234	\$39,809	\$199,043
Elwood	\$7,369	\$4,535	\$11,904
Fairfield	\$13,433	\$3,362	\$16,795

2010 Energy Efficiency and Conservation Block Grant Funded Projects (continued)

Applicant Name	Amount Requested	Match	Total Project Cost
Fairmont	\$41,233	\$10,308	\$51,541
Franklin	\$22,297	\$5,575	\$27,872
Frontier County	\$29,673	\$7,418	\$37,091
Garden County	\$9,774	\$2,421	\$12,194
Giltner	\$23,144	\$5,786	\$28,930
Gordon	\$93,206	\$23,301	\$116,507
Gothenburg	\$206,080	\$51,520	\$257,600
Greeley County	\$68,451	\$17,113	\$85,564
Hamilton County	\$120,029	\$30,008	\$150,037
Harlan County	\$250,000	\$89,500	\$339,500
Hartington	\$65,655	\$16,414	\$82,069
Hayes County	\$55,500	\$15,000	\$70,500
Hazard	\$13,340	\$3,335	\$16,675
Hemingford	\$221,490	\$59,999	\$281,489
Holdrege	\$250,000	\$93,029	\$343,029
Hooker County	\$47,200	\$11,800	\$59,000
Humboldt	\$78,125	\$19,531	\$97,657
Kimball	\$52,591	\$13,148	\$65,739
La Vista	\$40,154	\$10,039	\$50,193
Lexington	\$250,000	\$102,500	\$352,500
Malmo	\$1,920	\$480	\$2,400
McCook	\$84,726	\$21,181	\$105,907
McCool Junction	\$19,846	\$4,962	\$24,808
Mead	\$19,061	\$4,765	\$23,826
Mitchell	\$80,000	\$25,000	\$105,000
Mullen	\$5,960	\$1,490	\$7,449
Nebraska City	\$101,905	\$25,476	\$127,381
Nelson	\$21,847	\$5,463	\$27,310
Nemaha County	\$137,075	\$34,269	\$171,343
Ogallala	\$82,223	\$20,556	\$102,779
Orleans	\$18,920	\$4,731	\$23,651
Osceola	\$9,120	\$2,280	\$11,400
Otoe County	\$101,053	\$25,263	\$126,316

2010 Energy Efficiency and Conservation Block Grant Funded Projects (continued)

Applicant Name	Amount Requested	Match	Total Project Cost
Pawnee County	\$5,000	\$1,250	\$6,249
Paxton	\$14,554	\$3,639	\$18,193
Perkins County	\$230,832	\$57,708	\$288,540
Petersburg	\$21,214	\$5,303	\$26,517
Phelps County	\$53,816	\$13,454	\$67,269
Pilger	\$36,643	\$10,797	\$47,440
Polk	\$67,536	\$16,884	\$84,420
Potter	\$28,455	\$7,114	\$35,569
Prague	\$46,579	\$11,645	\$58,224
Randolph	\$8,560	\$2,140	\$10,700
Red Willow County	\$250,000	\$507,900	\$757,900
Rock County	\$145,275	\$48,425	\$193,700
Saline County	\$249,972	\$395,950	\$645,922
Scribner	\$225,189	\$56,297	\$281,486
Seward	\$239,850	\$274,170	\$514,020
Shelton	\$35,767	\$8,942	\$44,709
Sherman County	\$79,070	\$19,767	\$98,837
Silver Creek	\$52,794	\$13,198	\$65,992
South Sioux City	\$250,000	\$88,978	\$338,978
Springfield	\$24,800	\$6,200	\$31,000
Stromsburg	\$24,800	\$6,200	\$31,000
Superior	\$250,000	\$67,800	\$317,800
Tecumseh	\$224,090	\$69,331	\$293,421
Utica	\$3,200	\$800	\$4,000
Valentine	\$174,400	\$43,600	\$218,000
Verdigre	\$10,000	\$2,515	\$12,515
Wahoo	\$78,800	\$19,700	\$98,500
Wakefield	\$8,900	\$2,225	\$11,125
Walthill	\$140,508	\$35,127	\$175,635
Waverly	\$35,642	\$8,910	\$44,552
Wayne	\$250,000	\$383,596	\$633,596
Wilber	\$122,145	\$30,536	\$152,681
York County	\$168,484	\$56,159	\$224,643
Grand Total	\$8,796,237	\$3,968,305	\$12,764,543

Nebraska Net Metered Renewable Installations

Utility	Total Number of Installations	Total Estimated Generating Capacity of Qualified Facilities (kilowatts)	Total Estimated Energy Received From Customer Generator (kilowatt-hours)	Total Estimated Energy Produced By The Customer Generators (kilowatt-hours)
Burt County PPD	3	9	3,600	1,200
Custer PPD	1	1	0	45
Gering	1	2.4	0	1468
High West Energy, Inc.	1	2	3,568	586
K.B.R. Rural PPD	1	2.4	346	735
LES	9	60	19,614	37,438
Loup River PPD	2	36.5	0	3,679
Madison	1	10	2,080	4,120
McCook PPD	1	5	817	3,193
NPPD	10	20	0	11,000
Norris PPD	12	50.08	0	63,771
North Central PPD	1	8	4,546	18,000
Northeast NE PPD	1	2	870	3,790
Northwest Rural PPD	3	22.8	0	10,086
OPPD	16	89	667	133,394
Panhandle Rural Electric Association Membership	1	12	7,565	23,341
Roosevelt PPD	4	9.6	2,280	15,089
South Sioux City	1	2.9	0	47
Southern PPD	7	24.5	17,300	33,700
Southwest PPD	1	1.9	0	3,221
Stanton Co. PPD	1	10	1,045	6,142
Wahoo	2	10	720	9,350
Wheatbelt PPD	2	4.8	0	5,407
Total	82	396	65,018	388,802
*Values obtained from the 2010 Nebraska Power Review Board Net Metering Report				

Cogeneration

Cogeneration is the generation of electricity through the capture and use of otherwise wasted heat energy byproducts. Cogeneration typically takes place as part of industrial or utility scale processes where a great deal of heat is generated. There are currently four cogeneration operations in the State of Nebraska totaling over 50 MW and 250,000 MWh.

Nebraska's Consumer Generated Energy Policy

When customers choose to install their own residential renewable power generation, Nebraska requires all utilities in the state to offer net metering to customers that install solar, methane, wind, biomass, hydropower or geothermal energy systems of less than 25 kW.

The excess generation customers produce is credited on their next bill at the utility's avoided cost rate, with any revenue from excess generation at the end of an annualized period paid out to the customer. This is called net metering. In addition, Nebraska allows a 100 percent exemption from the sales and use tax imposed on the gross receipts from the sale, lease, or rental of personal property for use in community-based wind energy development projects (LB436). A table showing the number of renewable energy installations being net metered is shown above.

In addition to metered installations, Tri-state's Northwest Region also has about 75 photovoltaic (PV) installations for remote (off-grid) stock watering, as well as 24 leased PV systems. Northwest has six well service providers to install and maintain these units.

Nebraska Utility Program Offerings

Utility	Load Control	High Efficiency Equip. Rebates	Variable Freq. Drives	Grants / Custom Incentive	Irrigation Audits	HVAC Tune-up/Home Insulation	Appliance Recycling	Public Outreach
Arapahoe		x						x
Auburn		x	x			x	x	x
Battle Creek		x				x	x	x
Beatrice	x	x				x	x	x
Brainard		x					x	x
Burt Co PPD	x	x				x	x	x
Butler PPD	x	x			x	x	x	x
Cambridge							x	x
Cedar-Knox PPD	x	x	x			x	x	x
Central City		x				x	x	x
Chester		x						x
Cornhusker PPD	x	x				x	x	x
Cozad		x				x	x	x
Cuming Co PPD		x				x	x	x
Custer	x	x				x	x	x
Dawson PPD	x	x			x	x	x	x
Davenport		x						x
David City		x				x	x	x
Deshler		x						x
Dewitt		x					x	x
Dorchester		x						x
Edgar		x				x		x
Elkhorn	x	x				x	x	x
Fairmont		x					x	x
Franklin							x	
Friend		x					x	x
Giltner		x					x	x
Gothenberg		x				x		x
Hampton		x						x
Hebron		x					x	x
Hemingford								
Hickman							x	
Holbrook							x	
Holdrege	x	x				x	x	x
Howard Greeley RPPD	x	x			x	x	x	x
KBR RPPD	x	x					x	x
Laurel							x	
Leigh								
Lexington		x	x	x			x	x
LES		x	x	x		x		x
Lodgepole								x
Loup Valleys RPPD	x	x			x	x	x	x
Loup Power District	x	x	x			x	x	x

Nebraska Utility Program Offerings (continued)

Utility	Load Control	High Efficiency Equip. Rebates	Variable Freq. Drives	Grants / Custom Incentive	Irrigation Audits	HVAC Tune-up/Home Insulation	Appliance Recycling	Public Outreach
Lyons	x	x						x
Madison		x				x	x	x
McCook PPD	x	x			x	x	x	x
Minden		x				x	x	x
Mullen							x	
NPPD	x	x	x	x	x	x	x	x
Neligh		x				x	x	x
Nelson							x	x
Niobrara Valley EMC	x	x				x	x	x
Norris PPD	x	x	x		x	x	x	x
North Central PPD	x	x				x	x	x
Northeast NE RPPD	x	x		x	x	x		x
North Platte		x				x	x	x
OPPD	x	x		x	x		x	x
Ord	x	x				x	x	x
Perennial PPD	x	x				x	x	x
Polk Co RPPD	x	x		x		x	x	x
Prague								x
Randolph		x					x	x
Schuyler							x	
Scribner							x	x
Seward	x	x				x	x	x
Seward Co PPD							x	x
Snyder		x						x
South Central PPD	x	x				x	x	x
South Sioux City		x	x				x	x
Southern PPD	x	x	x	x	x	x	x	x
Southwest PPD	x	x					x	x
Snyder		x						
Stanton Co PPD	x	x				x	x	x
St. Paul							x	
Stromsburg							x	
Superior		x				x		x
Sutton	x	x				x	x	x
Trenton							x	
Twin Valleys PPD	x	x				x	x	x
Valentine		x					x	x
Wahoo		x				x	x	x
Wakefield		x						x
Walthill								x
Wauneta							x	
Wayne		x				x	x	x
Wilcox		x					x	x
Wymore		x					x	x